

 **BOEING**
COMPONENT
MAINTENANCE MANUAL

TO: ALL HOLDERS OF OUTBOARD OVERHEAD STOWAGE BIN ASSEMBLY
COMPONENT MAINTENANCE MANUAL 25-28-13

REVISION NO. 5 DATED OCT 01/91

HIGHLIGHTS

Pages which have been added or revised are outlined below together with the highlights of the revision. Remove and insert the affected pages as listed and enter Revision No. and date on the Record of Revision Sheet.

CHAPTER/SECTION

AND PAGE NO.

TR & SB RECORD

1

1005,1023,1049-1050

DESCRIPTION OF CHANGE

Added SB 25-78 which adds hinge assembly 9994.

25-28-13

HIGHLIGHTS

01.1

Page 1

Oct 01/91

OUTBOARD OVERHEAD STOWAGE BIN ASSEMBLY

PART NUMBER 413T1002-65 THRU -71,-77,-89,
-93,-94,-101,-102,-123,
-126,-147,-159,-171,
-172,-271,-297,-298

COMPONENT MAINTENANCE MANUAL
WITH
ILLUSTRATED PARTS LIST

25-28-13

TITLE PAGE

Page 1

Jan 10/87

01.1



REVISION RECORD

- Retain this record in front of manual. On receipt of revision, insert revised pages in the manual, and enter revision number, date inserted and initial.

REVISION NUMBER	REVISION DATE	DATE FILED	BY	REVISION NUMBER	REVISION DATE	DATE FILED	BY

44073

25-28-13

REVISION RECORD

01 Page 1

Jul 10/83

TEMPORARY REVISION AND SERVICE BULLETIN RECORD

BOEING SERVICE BULLETIN	BOEING TEMPORARY REVISION	OTHER DIRECTIVE	DATE OF INCORPORATION INTO MANUAL
35-8 25-78		PRR B10607 PRR VDCT0089 PRR B10286 PRR B11203	JUL 10/82 JUL 10/82 OCT 10/83 JAN 10/87 OCT 01/91

25-28-13

TR & SB RECORD

01.1

Page 1

Oct 01/91

PAGE	DATE	CODE	PAGE	DATE	CODE
25-28-13			REPAIR-GENERAL		CONT.
			604	BLANK	
TITLE PAGE			REPAIR 1-1		
1	JAN 10/87	01.1	601	JAN 10/87	01.1
2	BLANK		602	BLANK	
REVISION RECORD			REPAIR 1-2		
1	JUL 10/83	01	601	JAN 10/87	01.1
2	BLANK		602	BLANK	
TR & SB RECORD			REPAIR 2-1		
*1	OCT 01/91	01.1	601	JAN 10/87	01.1
2	BLANK		602	BLANK	
LIST OF EFFECTIVE PAGES			REPAIR 2-2		
*1	OCT 01/91	01	601	JUL 10/83	01.1
THRU LAST PAGE			602	BLANK	
CONTENTS			REPAIR 3-1		
1	JUL 10/83	01	601	JAN 10/87	01.1
2	BLANK		602	BLANK	
INTRODUCTION			REPAIR 3-2		
1	JUL 10/83	01.1	601	JAN 10/87	01.1
2	BLANK		602	BLANK	
DESCRIPTION & OPERATION			REPAIR 4-1		
1	JAN 10/87	01.1	601	JUL 10/83	01
2	BLANK		602	BLANK	
DISASSEMBLY			REPAIR 4-2		
301	JUL 10/83	01	601	JAN 10/87	01.1
302	BLANK		602	BLANK	
CHECK			REPAIR 5-1		
501	JUL 10/83	01	601	JAN 10/87	01.1
502	BLANK		602	BLANK	
REPAIR-GENERAL			REPAIR 6-1		
601	JUL 10/83	01	601	JAN 10/87	01.1
602	JUL 10/83	01	602	BLANK	
603	JAN 10/87	01.1			

* = REVISED, ADDED OR DELETED

25-28-13

EFFECTIVE PAGES
CONTINUED Page 1
01 Oct 01/91

PAGE	DATE	CODE	PAGE	DATE	CODE
REPAIR 6-2			ILLUSTRATED PARTS LIST		CONT.
601	JAN 10/87	01.1	*1023	OCT 01/91	01.1
602	BLANK		*1024	OCT 01/91	01.1
REPAIR 7-1			*1025	OCT 01/91	01.1
601	JAN 10/87	01.1	*1026	OCT 01/91	01.1
602	JUL 10/83	01	*1027	OCT 01/91	01.1
603	JAN 10/87	01.1	*1028	OCT 01/91	01.1
604	JAN 10/87	01.1	*1029	OCT 01/91	01.1
605	JAN 10/87	01.101	*1030	OCT 01/91	01.1
606	BLANK		*1031	OCT 01/91	01.1
ASSEMBLY			*1032	OCT 01/91	01.1
701	JUL 10/83	01	*1033	OCT 01/91	01.1
702	JUL 10/83	01.1	*1034	OCT 01/91	01.1
703	JUL 10/83	01	*1035	OCT 01/91	01.1
704	JUL 10/83	01	*1036	OCT 01/91	01.1
705	JUL 10/83	01	*1037	OCT 01/91	01.1
706	JAN 10/87	01.1	*1038	OCT 01/91	01.1
ILLUSTRATED PARTS LIST			1039	JAN 10/87	01.1
1001	JUL 10/83	01	1040	JAN 10/87	01.1
1002	JUL 10/83	01.1	1041	JAN 10/87	01.1
1003	JUL 10/83	01.1	1042	JAN 10/87	01.1
1004	JAN 10/87	01.1	1043	JAN 10/87	01.1
*1005	OCT 01/91	01.1	1044	JAN 10/87	01.1
1006	JUL 10/83	01.1	1045	JAN 10/87	01.1
1007	JAN 10/87	01.1	1046	JAN 10/87	01.1
1008	JAN 10/87	01.1	1047	JAN 10/87	01.1
1009	JAN 10/87	01.1	1048	JAN 10/87	01.1
1010	JAN 10/87	01.1	*1049	OCT 01/91	01.1
1011	JAN 10/87	01.1	*1050	OCT 01/91	01.1
1012	JAN 10/87	01.1	*1051	OCT 01/91	01.101
1013	JAN 10/87	01.1	1052	JAN 10/87	01.1
1014	JAN 10/87	01.1	1053	JAN 10/87	01.1
1015	JAN 10/87	01.1	1054	JAN 10/87	01.1
1016	JAN 10/87	01.1	1055	JAN 10/87	01.1
1017	JAN 10/87	01.1	1056	JAN 10/87	01.1
1018	JAN 10/87	01.1	1057	JAN 10/87	01.1
1019	JAN 10/87	01.1	1058	JAN 10/87	01.1
1020	JAN 10/87	01.1	1059	JAN 10/87	01.1
1021	JAN 10/87	01.1	1060	JAN 10/87	01.1
1022	JAN 10/87	01.1	1061	JAN 10/87	01.1
			1062	JAN 10/87	01.1
			1063	JAN 10/87	01.1
			1064	JAN 10/87	01.1

* = REVISED, ADDED OR DELETED

25-28-13

EFFECTIVE PAGES
 CONTINUED Page 2
 01 Oct 01/91

PAGE	DATE	CODE	PAGE	DATE	CODE
ILLUSTRATED PARTS LIST		CONT.			
1065	JAN 10/87	01.1			
1066	JAN 10/87	01.1			
1067	JAN 10/87	01.1			
1068	JAN 10/87	01.1			
1069	JAN 10/87	01.1			
1070	JAN 10/87	01.1			
1071	JAN 10/87	01.1			
1072	JAN 10/87	01.1			
1073	JAN 10/87	01.1			
1074	JAN 10/87	01.1			
1075	JAN 10/87	01.1			
1076	JAN 10/87	01.1			
1077	JAN 10/87	01.1			
1078	JAN 10/87	01.1			
1079	JAN 10/87	01.1			
1080	JAN 10/87	01.1			
1080A	JAN 10/87	01.1			
1080B	BLANK				

* = REVISED, ADDED OR DELETED

25-28-13

EFFECTIVE PAGES
LAST PAGE Page 3
01 Oct 01/91



TABLE OF CONTENTS

<u>Paragraph Title</u>	<u>Page</u>
Description and Operation	1
Testing and Troubleshooting (Not Applicable)	
Disassembly	301
Cleaning * [1]	
Check	501
Repair	601
Assembly	701
Fits and Clearances (Not Applicable)	
Special Tools, Fixtures, and Equipment (Not Applicable)	
Illustrated Parts List	1001

*[1] Special instructions not required. Use standard industry practices.

25-28-13

INTRODUCTION

The instructions in this manual provide the information necessary to perform maintenance functions ranging from simple checks and replacement to complete shop type repair.

This manual is divided into separate sections:

- | | |
|---|--------------------------------|
| 1. Title Page | 4. List of Effective Pages |
| 2. Record of Revisions | 5. Table of Contents |
| 3. Temporary Revisions &
Service Bulletin Record | 6. Introduction |
| | 7. Procedures and IPL Sections |

Refer to the Table of Contents for the page location of applicable sections. An asterisked flagnote *[] in place of the page number indicates that no special instructions are provided since the function can be performed using standard industry practices.

The beginning of the REPAIR section includes a list of the separate repairs, a list of applicable standard Boeing practices, and an explanation of the True Position Dimensioning symbols used.

An explanation of the use of the Illustrated Parts List is provided in the introduction to that section.

All weights and measurements used in the manual are in English units unless otherwise stated. When metric equivalents are given they will be in parentheses following the English units.

Design changes, optional parts, configuration differences and Service Bulletin modifications create alternate part numbers. These are identified in the Illustrated Parts List (IPL) by adding an alphabetical character to the basic item number. The resulting item number is called an alpha-variant. Throughout the manual, IPL basic item number references also apply to alpha-variants unless otherwise indicated.

Verification:

Assembly	Feb 1/83
Disassembly	Feb 1/83

25-28-13

INTRODUCTION

01.1

Page 1

Jul 10/83

OUTBOARD OVERHEAD STOWAGE BIN ASSEMBLY

DESCRIPTION AND OPERATION

1. Description and Operation

A. The outboard overhead stowage bin assembly consists of a stowage bin, door and latch assembly, and support to attach a passenger service unit to the lower surface. The door assembly is unlatched and swung out and up to allow access to the bin interior.

2. Leading Particulars (approximate)

Length: 65 inches

Width: 25 inches

Height: 19

Weight: 45 pounds

25-28-13

DESCRIPTION & OPERATION

01.1

Page 1

Jan 10/87

DISASSEMBLY

CAUTION: PARTS OF STOWAGE BIN ASSY ARE VISIBLE FROM CABIN INTERIOR. SPECIAL CARE MUST BE TAKEN TO PREVENT MARRING VISIBLE SURFACES.

NOTE: Disassemble component only as necessary to complete fault isolation, determine part serviceability, perform required repairs, and restore unit to serviceable condition.

1. Disassembly (IPL Fig. 1)

- A. Use standard industry practices and the following steps for disassembly.
- B. Unlatch and open door. Remove screws (186), washers (188) and door assy (47).
- C. Remove screws (184) and hinge assys (180, 182).
- D. Disassemble hinge assys (180, 182).

NOTE: Do not remove bushings (220, 222, 232, 248, 260, 262) unless necessary for repair or replacement.

- (1) Remove housing assy (191, 193) by removing bolts (194, 194A).
- (2) Remove screws (298), spring support assy (270, 272), and receptacle assy (296).
- (3) Remove screws (240), washers (241), nuts (242), and bracket (244).
- (4) Remove screw (204), roller (208), washer (212), and upper arm assy (246).
- (5) Remove screw (206), rollers (208, 210), and washer (212). Remove screw (254), washers (255), and cam follower (236, 238).
- (6) Withdraw shaft (256) and remove lower arm assy (258).
- (7) Remove screw (266) and gas spring assy (301).

25-28-13

DISASSEMBLY

01

Page 301

Jul 10/83

CHECK

NOTE: All item numbers refer to IPL Fig. 1.

1. Check all parts for obvious defects in accordance with standard industry practices.
2. Magnetic particle check per 20-20-01, nut (450) and sleeve (452).
3. Penetrant check per 20-20-02, Fittings (21, 23, 43, 45, 408, 410, 418, 420, 446, 456, 458), bracket (244), and tube (434).

25-28-13

01
CHECK
Page 501
Jul 10/83

REPAIR – GENERAL

1. Repair, replacement, and refinish procedures are included in separate sections as listed.

<u>P/N</u>	<u>NAME</u>	<u>REPAIR</u>
413T1020	UPPER ARM ASSY	1-1; 1-2
413T1021	LOWER ARM ASSY	2-1; 2-2
413T1022	CAM FOLLOWER ASSY	3-1; 3-2
413T1023	ACTUATOR ASSY	4-1; 4-2
412T3108	FITTING ASSY	5-1
412T3109	FITTING ASSY	5-1
412T2014	FITTING ASSY	6-1; 6-2
- -	MISCELLANEOUS PARTS REFINISH	7-1

2. Standard Practices

- A. Refer to the following standard practices as applicable, for details of procedures in individual repairs.

- 20-30-02 Stripping of Protective Finishes
- 20-30-03 General Cleaning Procedures
- 20-41-01 Decoding Table for Boeing Finish Codes
- 20-41-02 Application of Chemical and Solvent Resistant Finishes
- 20-41-04 Application and Repair of Interior Decorative Finishes
- 20-42-05 Bright Cadmium Plating
- 20-43-01 Chromic Acid Anodizing
- 20-50-03 Bearing Installation and Retention
- 20-50-08 Application of Dry Lubricants

3. Materials

NOTE: Equivalent substitutes may be used.

- A. Lubricant, Dry Film -- BMS 3-8, (Ref 20-60-03)

25-28-13

REPAIR-GENERAL

01

Page 601

Jul 10/83

- B. Primer -- BMS 10-11, type 1 (Ref 20-60-02)
Primer -- BMS 10-83, type 1 (Ref 20-60-02)
- C. Enamel -- BMS 10-83, type 2 (Ref 20-60-02)
Enamel -- BMS 10-78 (Ref 20-60-02)
- D. Water Emulsion Paint -- BMS 10-55 (Ref 20-60-02)
- E. Sealant -- BMS 5-95 (Ref 20-60-04)

25-28-13

REPAIR-GENERAL

01

Page 602

Jul 10/83

4. Dimensioning Symbols

A. Standard True Position Dimensioning Symbols used in applicable repair procedures are shown in Fig. 601.

—	STRAIGHTNESS	\oplus	THEORETICAL EXACT POSITION OF A FEATURE (TRUE POSITION)
\square	FLATNESS	\varnothing	DIAMETER
\perp	PERPENDICULARITY (OR SQUARENESS)	BASIC (BSC) OR	A THEORETICALLY EXACT DIMENSION USED TO DESCRIBE SIZE, SHAPE OR LOCATION OF A FEATURE FROM WHICH PERMISSIBLE VARIATIONS ARE ESTABLISHED BY TOLERANCES ON OTHER DIMENSIONS OR NOTES.
//	PARALLELISM	DIM	
\bigcirc	ROUNDNESS	-A-	DATUM
\bigcirc	CYLINDRICITY	\textcircled{M}	MAXIMUM MATERIAL CONDITION (MMC)
\frown	PROFILE OF A LINE	\textcircled{S}	REGARDLESS OF FEATURE SIZE (RFS)
\triangle	PROFILE OF A SURFACE	\textcircled{P}	PROJECTED TOLERANCE ZONE
\odot	CONCENTRICITY		
\equiv	SYMMETRY		
\sphericalangle	ANGULARITY		
\nearrow	RUNOUT		

EXAMPLES

$\boxed{\text{—} \quad 0.002}$	STRAIGHT WITHIN 0.002	$\boxed{\textcircled{\text{C}} \quad \varnothing \quad 0.0005}$	CONCENTRIC TO C WITHIN 0.0005 DIAMETER (FULL INDICATOR MOVEMENT)
$\boxed{\perp \quad B \quad 0.002}$	PERPENDICULAR TO B WITHIN 0.002	$\boxed{\equiv \quad A \quad 0.010}$	SYMMETRICAL WITH A WITHIN 0.010
$\boxed{\parallel \quad A \quad 0.002}$	PARALLEL TO A WITHIN 0.002	$\boxed{\sphericalangle \quad A \quad 0.005}$	ANGULAR TOLERANCE 0.005 WITH A
$\boxed{\bigcirc \quad 0.002}$	ROUND WITHIN 0.002	$\boxed{\oplus \quad B \quad \varnothing \quad 0.002 \quad \textcircled{S}}$	LOCATED AT TRUE POSITION WITHIN 0.002 DIA IN RELATION TO DATUM B, REGARDLESS OF FEATURE SIZE
$\boxed{\bigcirc \quad 0.010}$	CYLINDRICAL SURFACE MUST LIE BETWEEN TWO CONCENTRIC CYLINDERS, ONE OF WHICH HAS A RADIUS 0.010 INCH GREATER THAN THE OTHER	$\boxed{\perp \quad A \quad \varnothing \quad 0.010 \quad \textcircled{M} \quad 0.510 \quad \textcircled{P}}$	AXIS IS TOTALLY WITHIN A CYLINDER OF 0.010-INCH DIAMETER, PERPENDICULAR TO, AND EXTENDING 0.510-INCH ABOVE, DATUM A, MAXIMUM MATERIAL CONDITION
$\boxed{\frown \quad A \quad 0.006}$	EACH LINE ELEMENT OF THE SURFACE AT ANY CROSS SECTION MUST LIE BETWEEN TWO PROFILE BOUNDARIES 0.006 INCH APART IN RELATION TO DATUM PLANE A	$\boxed{2.000}$	EXACT DIMENSION IS 2.000
$\boxed{\triangle \quad A \quad 0.020}$	SURFACES MUST LIE WITHIN PARALLEL BOUNDARIES 0.02 INCH APART AND EQUALLY DISPOSED ABOUT TRUE PROFILE	OR 2.000 BSC	

True Position Dimensioning Symbols
Figure 601

25-28-13

REPAIR-GENERAL

01.1 Page 603

Jan 10/87

UPPER ARM ASSEMBLY - REPAIR 1-1

413T1020-1, -4

NOTE: Refer to REPAIR-GEN for list of applicable standard practices.

1. Bushing Replacement (IPL Fig. 1)

A. Remove bushings.

B. Install bushings (248) per 20-50-03.

- (1) Coat ID of hole and OD of bushing with BMS 10-11, type 1 primer and press bushings into arm (252) while primer is wet.
- (2) Fillet seal bushing flange to arm using BMS 5-95 sealant.
- (3) Fill gap between bushings with BMS 5-95 sealant. Remove excess sealant from inner surface of bushings.

25-28-13

REPAIR 1-1

01.1

Page 601

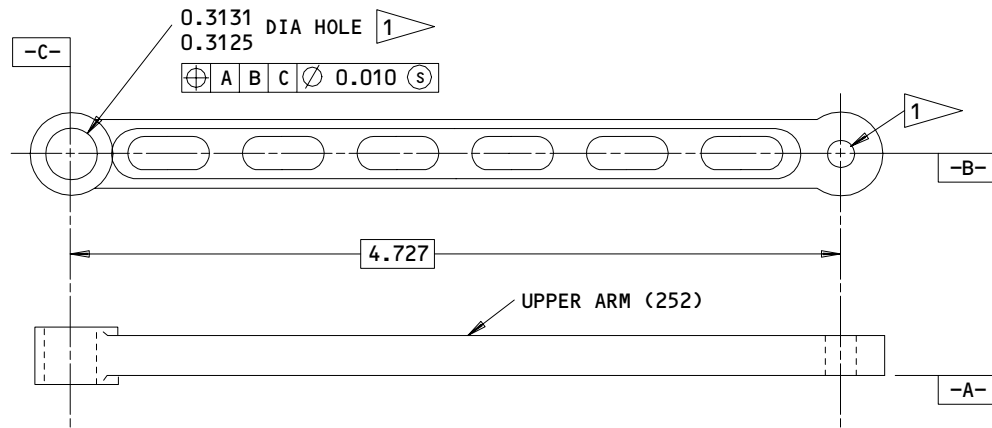
Jan 10/87

ARM - REPAIR 1-2

413T1020-2, -5

1. Refinish

NOTE: Repair consists of stripping and restoring original finish. Refer to Figure 601 for refinish procedures and to REPAIR-GEN for list of applicable standard practices.



REFINISH

TREAT SURFACES PER MIL-C-5541 (COLORED FILM)
OR MIL-A-8625 (CHROMIC ACID ANODIZE).
APPLY 1 COAT BMS 10-11, TYPE 1 PRIMER (F-18.05).
APPLY BMS 10-83, TYPE 1 PRIMER AND TYPE 2
ENAMEL (F-22.05-7362).

ALL DIMENSIONS ARE IN INCHES

1 OMIT PRIMER AND ENAMEL FROM HOLE

Upper Arm Repair
Figure 601

45244

25-28-13

REPAIR 1-2

01.1

Page 601

Jan 10/87

LOWER ARM ASSEMBLY – REPAIR 2-1

413T1021-1

NOTE: Refer to REPAIR-GEN for list of applicable standard practices.

1. Bushing Replacement (IPL Fig. 1)

A. Remove bushings.

B. Install bushings (260, 262) per 20-50-03.

- (1) Coat ID of holes and OD of bushings with BMS 10-11, type 1 primer. Press bushings (260) into end holes and bushing (262) into center hole of arm (264) while primer is wet.
- (2) Fillet seal bushing flange to arm with BMS 5-95 sealant.
- (3) Fill gap between bushings with BMS 5-95 sealant. Remove excess sealant from inner surface of bushings.

25-28-13

REPAIR 2-1

01.1

Page 601

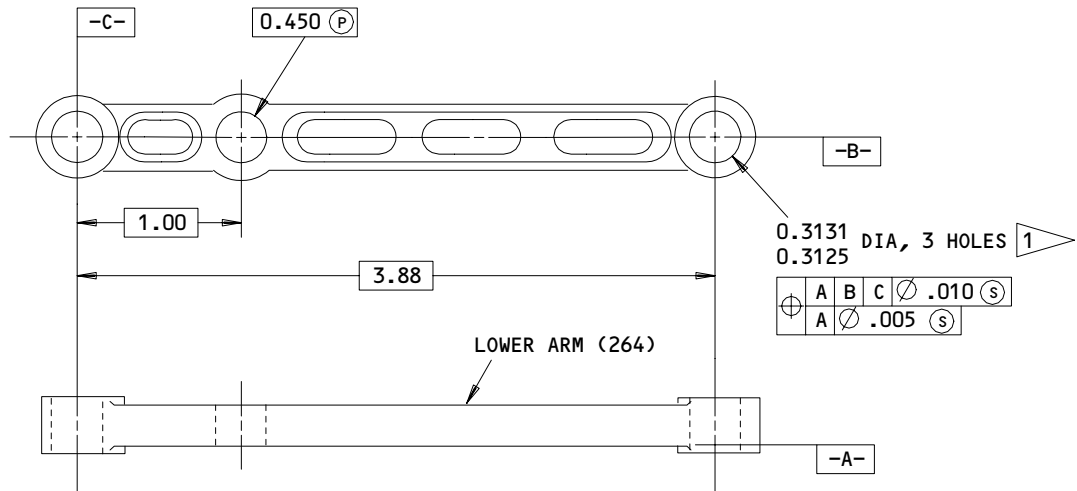
Jan 10/87

ARM - REPAIR 2-2

413T1021-2

1. Refinish

NOTE: Repair consists of stripping and restoring original finish. Refer to Fig. 601 for refinish procedures and to REPAIR-GEN for list of applicable standard practices.



REFINISH

TREAT SURFACES PER MIL-C-5541 (COLORED FILM)
OR MIL-A-8625 (CHROMIC ACID ANODIZE).
APPLY 1 COAT BMS 10-11, TYPE 1 PRIMER (F-18.05).
APPLY BMS 10-83, TYPE 1 PRIMER AND TYPE 2
ENAMEL (F-22.05-7362).

ALL DIMENSIONS ARE IN INCHES

1 OMIT PRIMER AND ENAMEL FROM HOLES

Lower Arm Repair
Figure 601

45242

25-28-13

REPAIR 2-2

01.1

Page 601

Jul 10/83

CAM FOLLOWER ASSEMBLY - REPAIR 3-1

| 413T1022-7, -8, -11, -12, -19, -20

NOTE: Refer to REPAIR-GEN for list of applicable standard practices.

1. Bushing Replacement (IPL Fig. 1)

- A. Remove bushings.
- B. Coat ID of hole and OD of bushing (232) with BMS 10-11, type 1 primer and press bushing into cam follower (236, 238) while primer is wet.

25-28-13

REPAIR 3-1

01.1

Page 601

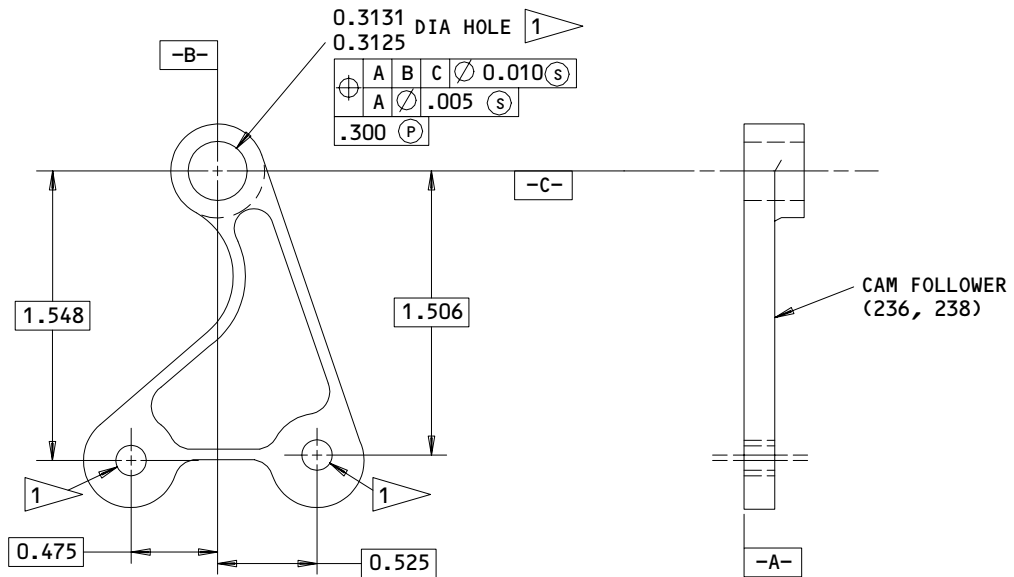
Jan 10/87

CAM FOLLOWER – REPAIR 3-2

413T1022-9, -10, -13, -14, -17, -18

1. Refinish

NOTE: Repair consists of stripping and restoring original finish. Refer to Fig. 601 for refinish procedures and to REPAIR-GEN for list of applicable standard practices.



REFINISH

TREAT SURFACES PER MIL-C-5541 (COLORED FILM)
OR MIL-A-8625 (CHROMIC ACID ANODIZE).
APPLY 1 COAT BMS 10-11, TYPE 1 PRIMER (F-18.05).
APPLY BMS 10-23, TYPE 1 PRIMER AND TYPE 2
ENAMEL (F-22.05-7362).

ALL DIMENSIONS ARE IN INCHES

1 OMIT PRIMER AND ENAMEL FROM HOLE.

Cam Follower Repair
Figure 601

45240

25-28-13

REPAIR 3-2

01.1

Page 601

Jan 10/87

ACTUATOR ASSEMBLY - REPAIR 4-1

413T1023-1, -2

NOTE: Refer to REPAIR-GEN for list of applicable standard practices.

1. Bushing Replacement (IPL Fig. 1)

A. Remove bushings.

B. Install bushings (220, 222) per 20-50-03.

- (1) Coat ID of hole and OD of bushings with BMS 10-11, type 1 primer. Press bushings into actuator (324, 326) while primer is wet.
- (2) Fillet seal bushing flange to actuator with BMS 5-95 sealant.

25-28-13

REPAIR 4-1

01

Page 601

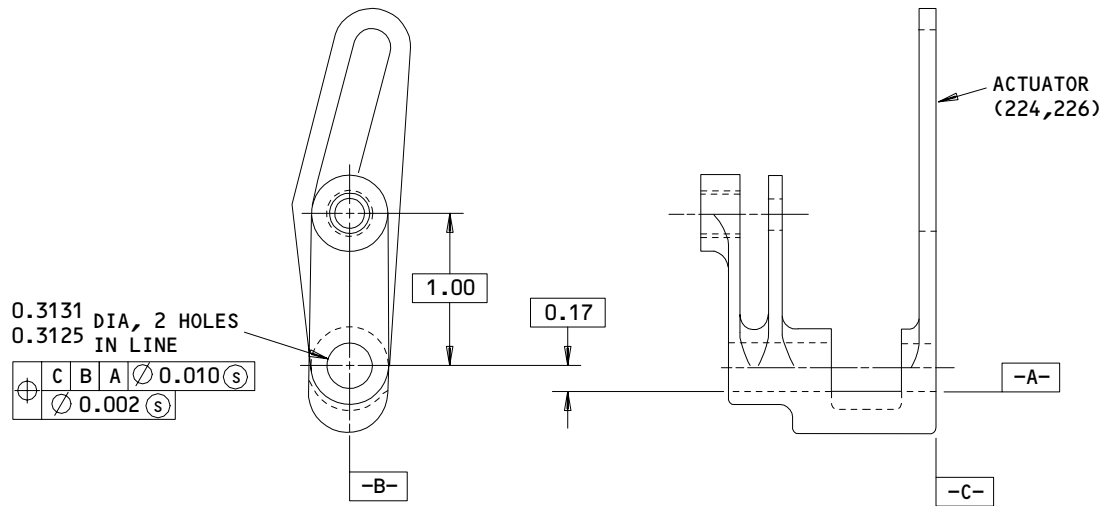
Jul 10/83

ACTUATOR - REPAIR 4-2

413T1023-3, -4

1. Refinish

- A. Repair consists of stripping and restoring original finish. Refer to Fig. 601 for refinish procedures and to REPAIR-GEN for list of applicable standard practices.



REFINISH

SULFURIC ACID HARD ANODIZE, CLASS 1,
 GRADE 2 ALL OVER (F-17.06).

ALL DIMENSIONS ARE IN INCHES

Actuator Repair
 Figure 601

45241

25-28-13

REPAIR 4-2

01.1

Page 601

Jan 10/87

FITTING ASSEMBLY - REPAIR 5-1

412T3108-1, -2, -5, -6, -13, -14, -21, -22
412T3109-1, -2, -7, -8, -9, -10

NOTE: Refer to REPAIR-GEN for list of applicable standard practices.

1. Bushing Replacement (IPL Fig. 1)

A. Remove bushings.

B. Install bushings per 20-50-03.

(1) Coat ID of holes and OD of bushings with BMS 10-11, type 1 primer and install bushings while primer is wet.

(2) Fillet seal bushing flange to fitting with BMS 5-95 sealant.

(a) Press bushings (17, 19, 20) into upper and lower holes respectively in fittings (21, 22, 23, 24).

(b) Press bushings (39 and 41) into upper and lower holes respectively in fittings (43, 45).

(c) Press bushing (406) into fitting (408, 410).

(d) Press bushing (417) into fitting (418, 420).

25-28-13

REPAIR 5-1

01.1

Page 601

Jan 10/87

FITTING ASSEMBLY - REPAIR 6-1

412T2014-1, -3

NOTE: Refer to REPAIR-GEN for list of applicable standard practices.

1. Bushing Replacement (IPL Fig. 1)

- A. Remove bushing.
- B. Coat ID of hole and OD of bushing with BMS 10-11, type 1 primer and press bushing (308) into fitting (310) while primer is wet per 20-50-03.
- C. Fillet seal bushing flange to fitting with BMS 5-95 sealant.

25-28-13

REPAIR 6-1

01.1

Page 601

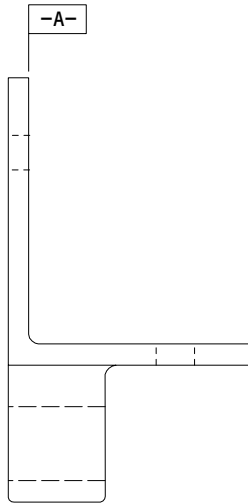
Jan 10/87

FITTING - REPAIR 6-2

412T2014-2, -4

1. Refinish

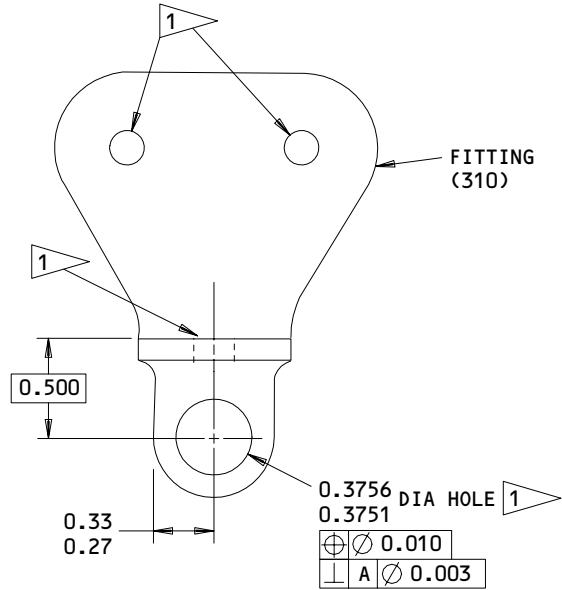
- A. Repair consists of stripping and restoring original finish. Refer to Fig. 601 for refinish procedures and to REPAIR-GEN for list of applicable standard practices.



REFINISH

CHROMIC ACID ANODIZE PER MIL-A-8625, TYPE 1 AND APPLY 1 COAT BMS 10-11, TYPE 1 PRIMER (F-18.13).

1 OMIT PRIMER FROM HOLE.



ALL DIMENSIONS ARE IN INCHES

NOTE: 412T2014-2 SHOWN,
412T2014-4 SIMILAR

Fitting Repair
Figure 601

45245

25-28-13

REPAIR 6-2

01.1

Page 601

Jan 10/87

MISCELLANEOUS PARTS REFINISH – REPAIR 7-1

NOTE: Refer to REPAIR-GEN for list of applicable standard practices.

1. Repair of parts listed in Fig. 601 consists of restoration of original finish.

IPL FIG. & ITEM	MATERIAL	FINISH
<u>Fig. 1</u>		
Pin (106, 110), bolt (242)	303 CRES	Prepare surface and passivate, method 2 (F-17.09).
Bolt (120), screw (204,206,254,266), roller (210), shaft (256)	303 CRES	Prepare surface and passivate, method 2 (F-17.09). Apply thin coat of dry film lubricant per Fig. 602.
Arm (112)	Al alloy	Sulfuric acid hard anodize, class 1, grade 2 (F-17.06).
Body (122)	Al alloy	Sulfuric acid hard anodize, class 1, grade 2 per Fig. 603 (F-17.06). Apply directional coarse grain buff satin finish using L-Lea Compound of 120 grit Al oxide or equivalent. Apply in direction shown in Fig. 603. Apply BMS 10-78 clear baking enamel (F-14.26).
Bracket (130), Rail (321 thru 325,393 thru 397), Channel (342A,344A,364, 366). Fitting (446,456, 458).	Al Alloy	Chromic acid anodize per MIL-A-8625, type 1 and apply 1 coat BMS 10-11, type 1 primer (F-18.13).

Refinish Details
Fig. 601 (Sheet 1)

25-28-13

REPAIR 7-1

01.1

Page 601

Jan 10/87

IPL FIG. & ITEM	MATERIAL	FINISH
Brackets (124,136, 138), Bracket Assys (145,146)	Al alloy	Chromic acid anodize per MIL-A-8625, type 1 and apply 1 coat BMS 10-11, type 1 primer (F-18.13) then apply BMS 10-83, type 1 primer and type 2 enamel (F-22.05-7362).
End Support (148, 149), Bracket (244), Doubler (468, 470)	Al alloy	Treat surface per MIL-C-5541 (colored film) or MIL-A-8625, type 1 (chromic acid anodize) and apply 1 coat BMS 10-11, type 1 primer (F-18.05). Apply BMS 10-83, type 1 primer and type 2 enamel (F-22.05-7362) per Fig. 604.
Bracket Assy (368, 370)	Al alloy	Anodize per MIL-A-8625, type 1 (chromic acid) or type 2 (sulfuric acid) (F-17.05). Apply 1 coat BMS 10-11, type 1 primer (F-20.02).
Nut (450), Sleeve (452).	Steel - 4340	Cadmium plate (0.0002 to 0.0004 in.) per QQ-P-416, type 2, class 3 (F-15.02). Ht.Tr.: 180-200 ksi.
Retainer (488)	Al alloy	Apply directional coarse grain buff satin finish using L-Lea Compound of 120 grit aluminum oxide or equivalent (surface and direction per Fig. 605) then sulfuric acid anodize (F-14.251).
Bracket (580)		Over existing primer, apply BMS 10-83, type 1 primer and type 2 enamel (F-22.05-7362).
Hinge Assys (189, 189A)	Al alloy	On all exterior surfaces, including edges of cutouts, apply BMS 10-55, flat water emulsion paint (F-14.942-712) then apply BMS 10-83, type 1 primer and type 2 enamel (F-22.05-7362). Overspray allowed on internal parts only where not visible through cutouts.

 Refinish Details
 Fig. 601 (Sheet 2)

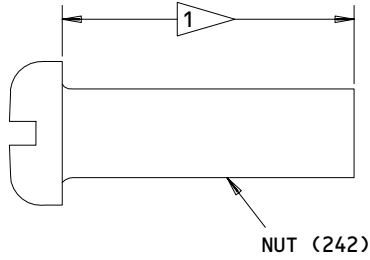
25-28-13

REPAIR 7-1

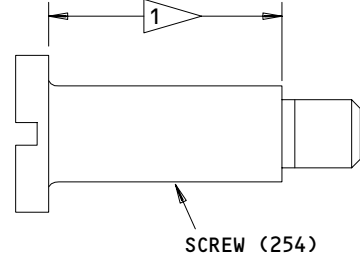
01

Page 602

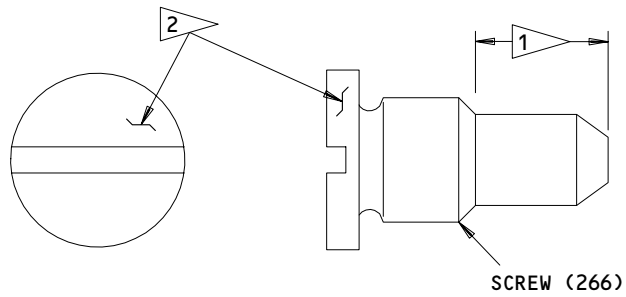
Jul 10/83



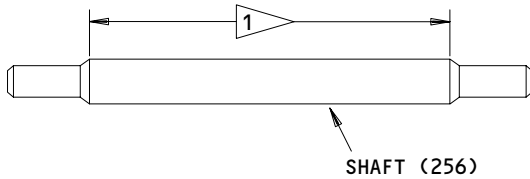
413T1083-5



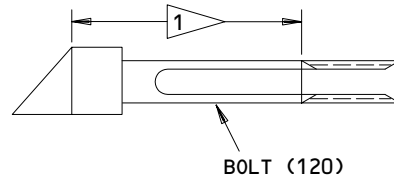
413T1083-6,-11



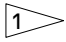
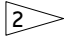
413T1083-8



413T1084-1



413T1092-2

-  APPLY THIN COAT OF DRY FILM LUBRICANT. SURFACE ROUGHNESS NO GREATER THAN 32AA.
-  APPLY BMS 10-83, TYPE 1 PRIMER AND TYPE 2 ENAMEL (F-22.05-7362).

Miscellaneous Refinish
Figure 602

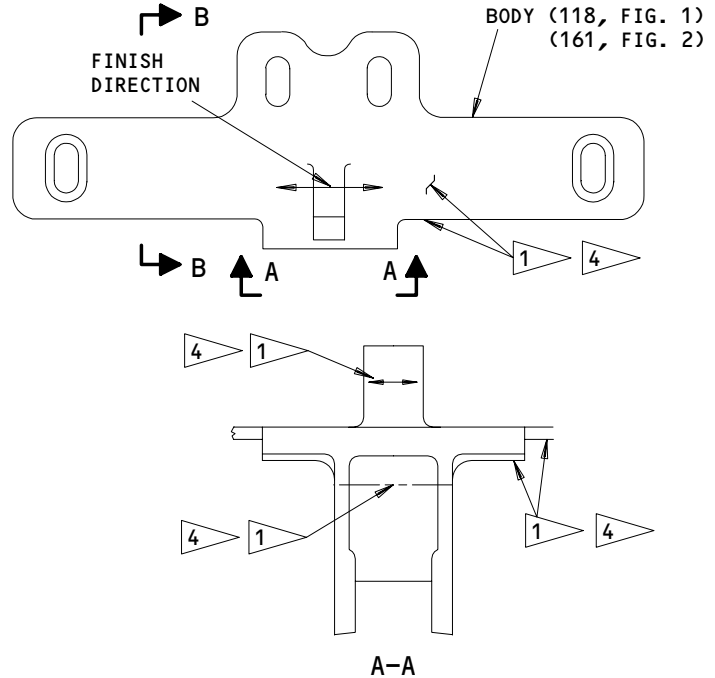
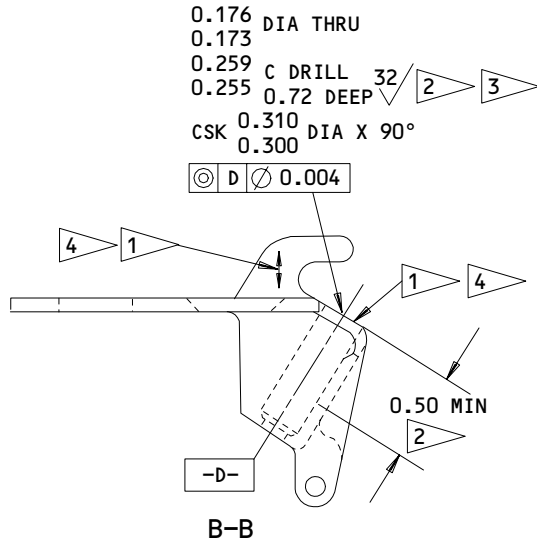
25-28-13

REPAIR 7-1

01.1

Page 603

Jan 10/87



- 1 413T1030-3
 APPLY DIRECTIONAL COARSE GRAIN BUFF SATIN FINISH, AS SHOWN, USING L-LEA COMPOUND OF 120 GRIT ALUMINUM OXIDE OR EQUIVALENT. APPLY BMS 10-78 CLEAR BAKING ENAMEL (F-14.261)
- 2 SULFURIC ACID HARD ANODIZE, CLASS 1, GRADE 2 (F-17.06) AT LEAST 0.50 IN. DEEP
- 3 DIMENSION AFTER FINISHING
- 4 413T1030-4
 GLASS BEAD PEEN, BEAD SIZE 165-331, INTENSITY 0.004A-0.007A, APPLY ONE COAT OF CLEAR BAKING ENAMEL, X75114

ALL DIMENSIONS ARE IN INCHES
 MATERIAL: AL ALLOY

413T1030-3,-4

Body Refinish
 Figure 603

45258

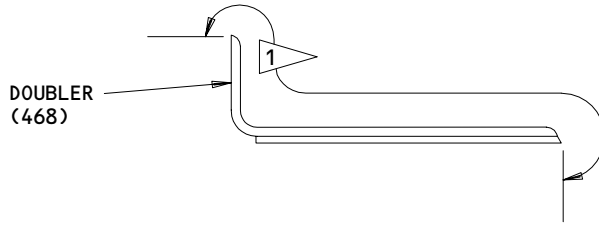
25-28-13

REPAIR 7-1

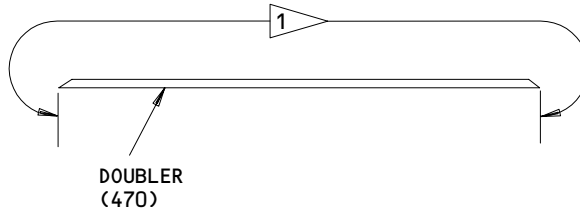
01.1

Page 604

Jan 10/87



412T2046-1

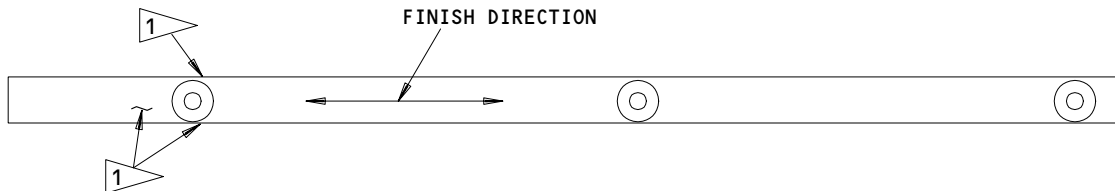


412T2046-2

- 1 TREAT SURFACE PER MIL-C-5541 (COLORED FILM) OR MIL-A-8625 (CHROMIC ACID ANODIZE). APPLY 1 COAT BMS 10-11 TYPE 1 PRIMER (F-18.05). APPLY BMS 10-83, TYPE 1 PRIMER AND TYPE 2 ENAMEL (F-22.05-7362).

Doubler Refinish
Figure 604

45249



- 1 APPLY DIRECTIONAL COARSE GRAIN BUFF SATIN FINISH USING L-LEA COMPOUND OF 120 GRIT ALUMINUM OXIDE OR EQUIV IN DIRECTION INDICATED, THEN SULFURIC ACID ANODIZE.

413T1095-4
Retainer Refinish
Figure 605

44076

25-28-13

REPAIR 7-1

01.101

Page 605

Jan 10/87

ASSEMBLY

1. Materials

NOTE: Equivalent substitutes may be used.

- A. Corrosion Preventive Compound -- MIL-C-16173, grade 2
- B. Corrosion Preventive Compound -- MIL-C-11796, Class 3 (opt.)
- C. Grease -- MIL-G-23827 (opt.)
- D. Retaining Compound -- Loctite RC/688

2. Assembly (IPL Fig. 1)

CAUTION: PARTS OF STOWAGE BIN ASSEMBLY ARE VISIBLE FROM CABIN INTERIOR.
SPECIAL CARE MUST BE TAKEN TO PREVENT MARRING VISIBLE SURFACES.

- A. Use standard industry practices and the following steps for assembly.
- B. Assemble tension tie assembly (422, 422A)
 - (1) Apply a thin coat of corrosion preventative compound or grease to external and internal mating threads of tube (434), nuts (450, 454), and rod end bearing (448). Thread nut (454) into tube (434) until nut head is snug against tube.
 - (2) Thread nut (450) onto rod end bearing (448).
 - (3) Insert rod end bearing through sleeve (452) and thread into nut (454). Turn down until top of rod end bearing is 2.57 to 2.63 in. from end of tube (Fig. 701). Tighten nut (450) down against sleeve.
 - (4) Insert fitting assembly (438) into tube (434) such that shoulder of fitting (446) is flush within 0.02 in. of tube end. Secure fitting assembly with bolts (440).
- C. Assemble latch assemblies (100)

NOTE: Bolt (120) has a dry film lubricated surface which should be protected from mechanical damage and kept clean.

25-28-13

01 ASSEMBLY
Page 701
Jul 10/83

- (1) Put spring (118) into body and insert bolt (120) through body (122), spring (118), washer (116), and into nut (114). Position bolt per Fig. 702.
- (2) Insert pin (106) through arm (112) and roller (108) and secure with retainers (104).
- (3) Slide arm (112) between washer (116) and body (122) and secure arm to body with pin (110) and retainers (104) (Fig. 702).
- (4) Tighten nut (114) until proper bolt adjustment is made (Fig. 702).

D. Assemble hinge assemblies (180, 182)

- (1) Insert shaft (256) through actuator assy (214, 216) and lower arm assembly (258).
- (2) Attach cam follower assembly (228).

NOTE: Screws (204, 206, 254) must be retained in cam follower assembly.

- (a) Retain screws (204, 206, 254) by applying retaining compound to threads before installation, then tightening to 14 to 17 lb-in.
 - (b) Insert screw (254) thru washers (255), lower arm assembly, and into cam follower assembly.
 - (c) Insert screw (204) thru roller (208), cam follower assembly, washer (212), and into upper arm assembly.
 - (d) Insert screw (206) thru roller (208), slot in actuator assembly, roller (210), washer (212), and into cam follower assembly.
 - (e) Retain screws (204, 206, 254) after assembly, by center punching and swaging threaded end of screw. Apply loosening torque of 15 lb-in to screws. If screw rotates, repeat retaining operation until a minimum 15 lb-in removal torque is attained.
- (3) Apply retaining compound to threads of screw (240) then attach bracket (244) to upper and lower arm assemblies with nuts (242), washers (241), and screws (240).
 - (4) Attach gas spring assy (301) to actuator assy with screw (266).

25-28-13

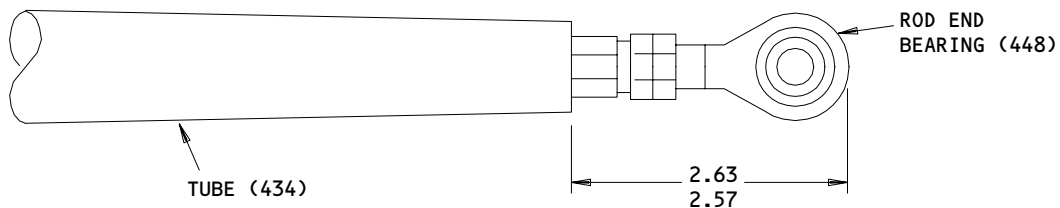
ASSEMBLY
Page 702
Jul 10/83

01.1

- (5) Insert guide on gas spring assembly into slot in spring housing assembly (282) and insert end of shaft (256) into guide hole in spring housing assembly.
 - (6) Insert pins in spring support assembly (270, 272) into alignment holes in spring housing assembly, with slot in support assembly over guide on gas spring assembly.
 - (7) Attach receptacle assembly (296) to spring support assembly and spring housing assembly with screws (298).
 - (8) Attach housing assembly (191, 193) by laying housing (195A, 195B) over spring housing assembly; ensure that rollers (208) fit properly into grooves. Insert bolt (194) through spacer (196), door (198), and into spring housing (292). Insert bolts (194A).
 - (9) Close door (198) by pushing stud (200) through door and into receptacle (300).
- E. Prepare faying surfaces of rail assys (383 thru 386) per 20-11-03, type 2 and Fig. 703. Maximum resistance to be 0.001 ohm.
- F. After door panel assemblies (47) are attached, adjust hinge assemblies to align door panels per Fig. 704.
- G. Adjust location of bracket (136) per Fig. 704.

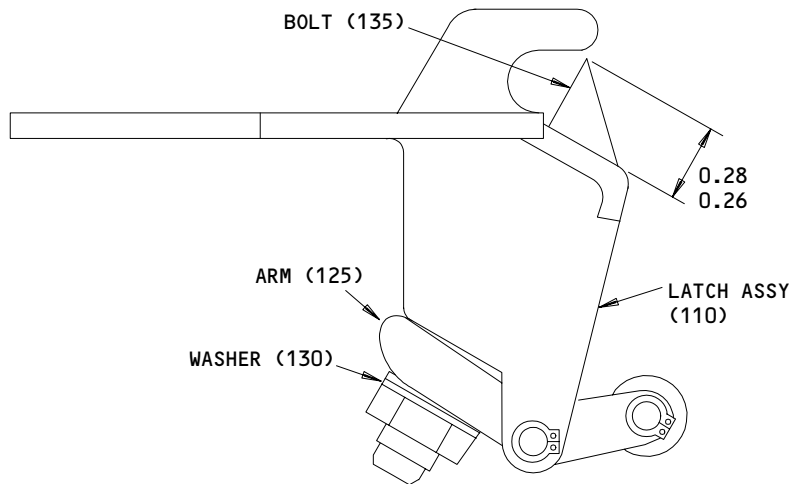
25-28-13

01 ASSEMBLY
Page 703
Jul 10/83



ALL DIMENSIONS ARE IN INCHES

Bearing Adjustment
 Figure 701



ALL DIMENSIONS ARE IN INCHES

Latch Assembly
 Figure 702

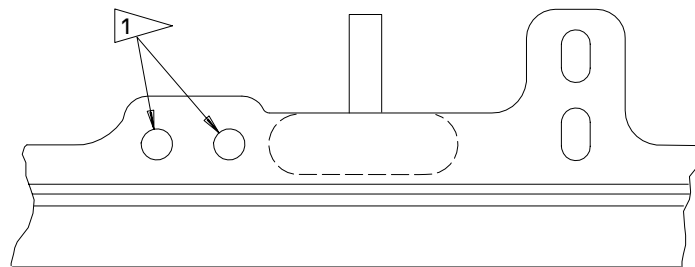
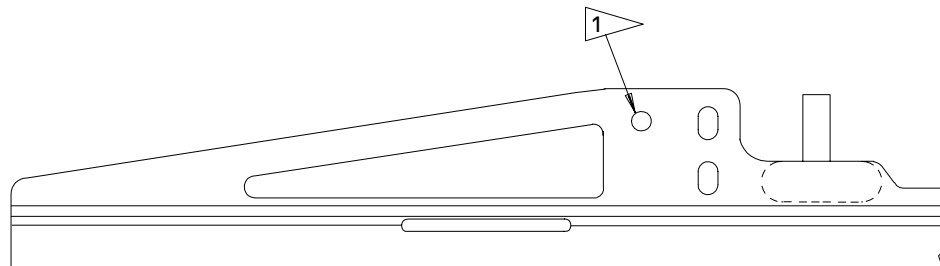
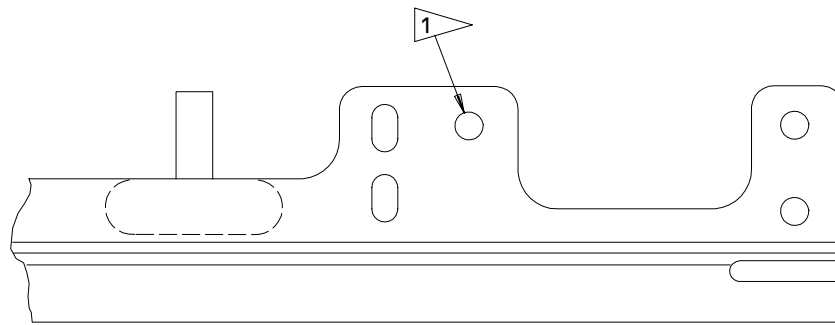
81253

45251

25-28-13

ASSEMBLY
 Page 704
 Jul 10/83

01



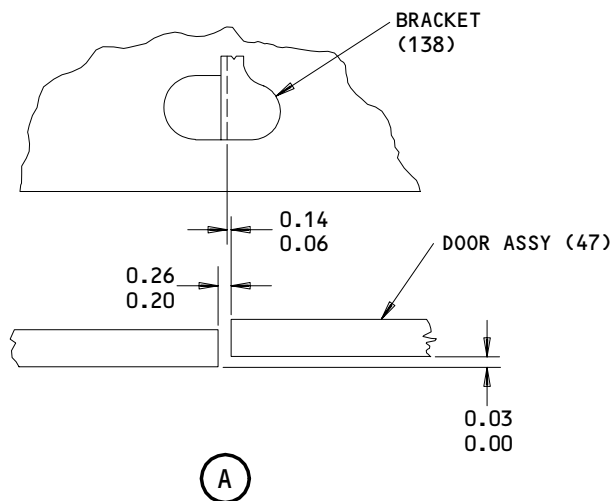
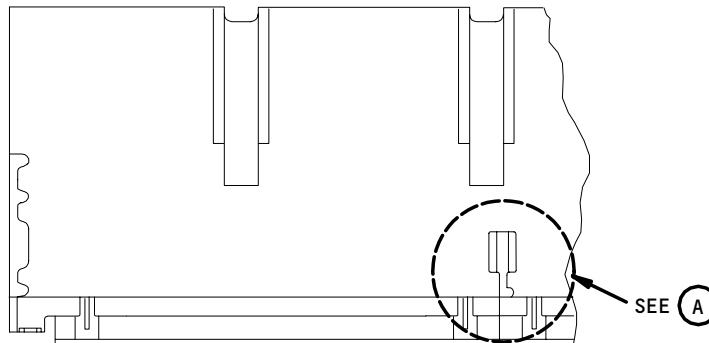
1 PREPARE FAYING SURFACES PER 20-11-03, TYPE 2.
MAXIMUM RESISTANCE TO BE 0.001 OHM.

Rail Assembly Preparation
Figure 703

25-28-13

ASSEMBLY
Page 705
Jul 10/83

01



ALL DIMENSIONS ARE IN INCHES

Panel Alignment
Figure 704

44077

25-28-13

01.1

ASSEMBLY
Page 706
Jan 10/87

ILLUSTRATED PARTS LIST

1. This section lists and illustrates replaceable or repairable component parts. The Illustrated Parts Catalog contains a complete explanation of the Boeing part numbering system.

2. Indentures show parts relationships as follows:

Assembly

Detail Parts for Assembly

Subassembly

Attaching Parts for Subassembly

Detail Parts for Subassembly

Detail Installation Parts (Included only if installation parts may be returned to shop as part of assembly)

3. One use code letter (A, B, C, etc.) is assigned in the EFF CODE column for each variation of top assembly. All listed parts are used on all top assemblies except when limitations are shown by use code letter opposite individual part entries.

4. Letter suffixes (alpha-variants) are added to item numbers for optional parts, Service Bulletin modification parts, configuration differences (except left- and right-hand parts), product improvement parts, and parts added between two sequential item numbers. The alpha-variant is not shown on illustrations when appearance and location of all variants of the part is the same.

5. Service Bulletin modifications are shown by the notations PRE SB XXXX and POST SB XXXX.

A. When a new top assembly part number is assigned by Service Bulletin, the notations appear at the top assembly level only. The configuration differences at detail part level are then shown by use code letter.

B. When the top assembly part number is not changed by the Service Bulletin, the notations appear at the detail part level.

6. Parts Interchangeability

Optional
(OPT)

The parts are optional to and interchangeable with other parts having the same item number.

Supersedes, Superseded By
(SUPSDS, SUPSD BY)

The part supersedes and is not interchangeable with the original part.

Replaces, Replaced By
(REPLS, REPLD BY)

The part replaces and is interchangeable with, or is an alternate to, the original part.

25-28-13

VENDORS

01556 MITE CORP HELI-COIL PRODUCTS DIVISION
SHELTER ROCK LANE
DANBURY, CONNECTICUT 06810

02758 NETWORKS ELECTRONIC CORP U S BEARING DIV
9750 DESOTO AVENUE
CHATSWORTH, CALIFORNIA 91311

04169 WESTERN SKY INDUSTRIES A DIVISION OF ATLAS CORPORATION
21300 CLOUD WAY
HAYWARD, CALIFORNIA 94545

06710 VALLEY-TODECO INCORPORATED
12975 BRADLEY AVENUE
SYLMAR, CALIFORNIA 91342

06725 AIR INDUSTRIES CORPORATION
12570 KNOTT STREET
GARDEN GROVE, CALIFORNIA 92641

06950 VSI CORP SCREWCORP DIV
13001 EAST TEMPLE AVENUE
CITY OF INDUSTRY, CALIFORNIA 91746

07757 STANDARD INSERT COMPANY
12280 MONTAGUE STREET
PACOIMA, CALIFORNIA 91331

08073 MAMCO MANUFACTURING CO INC
1411 NORTHWEST 50TH
SEATTLE, WASHINGTON 98107

08524 DEUTSCH FASTENER CORPORATION
PO BOX 92925 7001 WEST IMPERIAL HIGHWAY
LOS ANGELES, CALIFORNIA 90045

09192 ALUMINUM COMPANY OF AMERICA VERNON WORKS
5151 ALCOA AVENUE
VERNON, CALIFORNIA 90058

09455 LEAR SIEGLER INC TRANSPORT DYNAMICS DIV
PO BOX 1953 3131 WEST SEGERSTROM STREET
SANTA ANA, CALIFORNIA 92702

25-28-13

ILLUSTRATED PARTS LIST
01.1 Page 1002
Jul 10/83

VENDORS

10630 ANILLO INDUSTRIES, INCORPORATED
2090 NORTH GLASSELL
ORANGE, CALIFORNIA 92667

11815 TOWNSEND DIV OF TEXTRON INC CHERRY FASTENER UNIT
BOX 2157 1224 EAST WARNER AVENUE
SANTA ANA, CALIFORNIA 92707

12324 DUPREE INC STAKE FASTENER CO
PO BOX 3156 9835 DUPREE STREET
SOUTH EL MONTE, CALIFORNIA 91733

15653 KAYNAR MFG COMPANY INC KAYLOCK DIV
PO BOX 3001 800 SOUTH STATE COLLEGE BLVD
FULLERTON, CALIFORNIA 92634

15860 NEW HAMPSHIRE BALL BEARINGS, INCORPORATED ASTRO DIVISION
155 LEXINGTON AVENUE
LACONIA, NEW HAMPSHIRE 03246

17446 HUCK MFG CO GOV CONTRACTS LOS ANGELES DIV SUB OF FED-MOGUL
900 WATSON CENTER ROAD
CARSON, CALIFORNIA 90745

17943 FEDERAL MANUFACTURING CORPORATION
6910 FARMDALE AVENUE
NORTH HOLLYWOOD, CALIFORNIA 91605

23294 AVALON MACHINE PRODUCTS INC
15337 ALLEN STREET
PARAMOUNT, CALIFORNIA 90723

27624 PAUL R BRILES INC P.B. FASTENER DIV
1700 WEST 132ND STREET PO BOX 1157
GARDENA, CALIFORNIA 90249

29666 HUCK MANUFACTURING CO SUB OF FEDERAL-MOGUL CORP
6 THOMAS
IRVINE, CALIFORNIA 92714

34742 TYEE AIRCRAFT INCORPORATED
SNOHOMISH COUNTY AIRPORT
EVERETT, WASHINGTON 98204

25-28-13

VENDORS

42838 NATIONAL RIVET AND MANUFACTURING COMPANY
1-21 EAST JEFFERSON STREET
WAUPUN, WISCONSIN 53963

50294 NMB INC
9730 INDEPENDENCE AVENUE
CHATSWORTH, CALIFORNIA 91311

52828 REPUBLIC FASTENER MFG CORP
1300 RANCHO CONEJO BLVD
NEWBURY PARK, CALIFORNIA 91320

53551 ALLFAST FASTENING SYSTEMS INC
15252 DON JULIAN ROAD PO BOX 3166
CITY OF INDUSTRY, CALIFORNIA 91744

55580 BRILES RIVET CORP
2125 SOUTH HATHAWAY STREET
SANTA ANA, CALIFORNIA 92705

55787 GAS SPRING CORP
92 COUNTY LINE ROAD
COLMAR, PENNSYLVANIA 18915

56878 SPS TECHNOLOGIES INC
HIGHLAND AVENUE
JENKINTOWN, PENNSYLVANIA 19046

60119 THE MONADNOCK CO
18301 ARENTH AVENUE
PO BOX 1222
CITY OF INDUSTRY, CALIFORNIA 91749

60516 WEST COAST AEROSPACE INC
812 MIRAFLORES STREET
SAN PEDRO, CALIFORNIA 90731

70265 ALL POWER MANUFACTURING COMPANY
13141 MOLETTE STREET
SANTE FE SPRINGS, CALIFORNIA 90670

71087 BOOTS ACFT NUT DIV TOWNSEND CO SEE TEXTRON INC CHERRY
FASTENER TOWNSEND DIV V11815

71286 REXNORD INC SPECIALITY FASTENER DIV
601 ROUTE 46 WEST, PO BOX 601
HASBROUCK HEIGHTS, NEW JERSEY 07604

25-28-13

ILLUSTRATED PARTS LIST
01.1 Page 1004
Jan 10/87

VENDORS

72962 AMERACE CORP ESNA DIV
2330 VAUXHALL ROAD
UNION, NEW JERSEY 07083

73134 HEIM DIV INCOM INTERNATIONAL INC
60 ROUND HILL ROAD
FAIRFIELD, CONNETICUT 06430

73197 HI-SHEAR CORPORATION
2600 SKYPARK DRIVE
TORRANCE, CALIFORNIA 90509

76530 MONADNOCK MILLS SEE CINCH-MONADNOCK DIV OF UNITED CARR
CINCH-MONADNOCK DIV TRW SEE TRW ELECTRONIC COMP
TRW INC TRW ELECTRONIC COMPONENTS CINCH-MONADNOCK DIV SEE
MONADNOCK CO THE V60119

77896 REXNORD INC. BEARING DIVISION
2400 CURTIS STREET
DOWNERS GROVE, ILLINOIS 60515

80477 ADAMS RITE PRODUCTS INC DIV OF MZZM INC
540 WEST CHEVY CHASE
GLENDALE, CALIFORNIA 91209

80539 SPS TECHNOLOGIES INC AEROSPACE PRODUCTS DIV
2701 SOUTH HARBOR BOULEVARD PO BOX 1259
SANTA ANA, CALIFORNIA 92702

81376 SOUTHWEST PRODUCTS COMPANY
2240 BUENA VISTA ST PO BOX 2046
IRVINDALE, CALIFORNIA 91706

85495 BRILES MFG CO SEE OMARK INDUSTRIES
PRECISION FASTENING SUB OF OMARK IND INC SEE DEUTSCH
FASTENER CORP V08524

92215 VOI-SHAN DIV OF VSI CORP
8463 HIGUERA STREET
CULVER CITY, CALIFORNIA 90230

94892 MASTER MACHINE PRODUCTS CORPORATION
2069 RANDOLPH STREET
HUNTINGTON PARK, CALIFORNIA 90255

97393 SHUR-LOK CORPORATION
2541 WHITE ROAD PO BOX 19584
IRVINE, CALIFORNIA 92713

25-28-13

ILLUSTRATED PARTS LIST
01.1 Page 1005
Oct 01/91

VENDORS

97613 SARGENT INDUSTRIES KAHR BEARING DIVISION
3010 NORTH SAN FERNANDO ROAD
BURBANK, CALIFORNIA 91503

97928 LITTON FASTENING SYSTEMS DIV OF LITTON SYSTEMS INC
3969 PARAMONT BOULEVARD
LAKEWOOD, CALIFORNIA 90712

25-28-13

ILLUSTRATED PARTS LIST
01.1 Page 1006
Jul 10/83

PART NUMBER	AIRLINE PART NO.	FIG.	ITEM	TTL REQ
AB4VCRG		1	444	1
AN316-6L		1	454	1
AN960C516L		1	430	1
AN960C8		1	116	2
AN960D10L		1	392B	8
AN960KD10L		1	35	12
		1	82	4
		1	318	16
		1	520	8
AN960PD10		1	356	2
		1	374	10
		1	462A	1
AN960PD10L		1	13A	12
		1	160A	6
		1	416J	3
		1	464A	1
		1	528	4
AN960PD8L		1	359	2
A11330-8-3		1	170	6
BACB10AB4		1	444	1
BACB28AR04A050A		1	308	1
		1	309	1
BACB28AR06A012A		1	20	2
		1	309J	1
BACB28AR06A024A		1	17A	2
		1	406A	1
BACB28X4C005		1	406	1
		1	417	1
BACB28X4C009		1	17	1
		1	39	1
BACB28X4C024		1	19	1
		1	41	1
BACB28Z5-025		1	428	2

25-28-13

PART NUMBER	AIRLINE PART NO.	FIG.	ITEM	TTL REQ
BACB30FN10-24		1	426A	1
BACB30GW6-16		1	440	2
BACB30LH3PU22		1	194A	8
BACB30LH3PU28		1	194	4
BACB30LU3-10		1	460	4
BACB30LU3-9		1	415J	3
BACC30K6		1	442	2
BACN10FX21		1	170	6
BACN10GH3A8		1	390	5
BACN10JC08		1	114	2
		1	359G	2
BACN10JC3		1	15	6
		1	37	6
		1	416M	3
		1	472	4
BACN10JC5CM		1	432	1
BACN10JP3B		1	360	2
BACN10JP3C		1	378	10
BACN10JR3F		1	338	14
BACN10KB3F		1	336	4
BACR15BA3AD		1	340	36
		1	362	4
		1	379	20
BACR15BA5KE5		1	326A	2
BACR15BB4AD4		1	391	10
BACS12FA3C5		1	184A	24
BACS18K10-15		1	486B	1
BACS18K10-15W		1	486A	1
BACS18K10-23		1	484A	2
BACS18K10-23W		1	484	2
BACW10P183AL		1	176	6
		1	188A	16
BAC27TPPS0118		1	610	2

25-28-13

 ILLUSTRATED PARTS LIST
 01.1 Page 1008
 Jan 10/87

PART NUMBER	AIRLINE PART NO.	FIG.	ITEM	TTL REQ
BAC27TPPS0248		1	611	2
		1	625	1
BAC29PPS0555		1	630A	1
BAC29PPS0557		1	635	1
BAC29PPS0558		1	640	1
BAC29PPS0619		1	645	2
BAC29PPS2172		1	650	2
BAC29PPS2176		1	655	2
BMS8-133		1	95	2
BRC500-8-3		1	170	6
BRF100A3		1	336	4
BRF200A3		1	338	14
BRH10A08		1	114	2
		1	359G	2
BRH10A3		1	15	6
		1	37	6
		1	416M	3
		1	472	4
BRM100A3		1	360	2
BRM300A3		1	378	10
BR1110C5M		1	432	1
BSSR4804		1	444	1
F1313		1	301A	4
F2000-3		1	336	4
F49322-3-21		1	170	6
F5000-3BAC		1	338	14
HL19PB10-24		1	426A	1
HU4-134		1	444	1
H01-5BAC		1	432	1
H10-08BAC		1	114	2
		1	359G	2
H10-3BAC		1	15	6
		1	37	6
		1	416M	3
		1	472	4
KWB4-20CRG		1	444	1
MK2000-3BAC		1	360	2
MK3000-3BAC		1	378	10
MS16624-5012		1	104	8
MS20253-2-083		1	87	2
MS21209C0610		1	234	8
MS21209C0615		1	250	4
MS21209F4-10		1	218	4
MS24585C93		1	118	2
MS35338-136		1	241	8

25-28-13

ILLUSTRATED PARTS LIST
01.1 Page 1009
Jan 10/87

PART NUMBER	AIRLINE PART NO.	FIG.	ITEM	TTL REQ
MS35338-43		1	392A	4
MS35650-305S		1	392C	4
NAS1352C04LB4		1	298	8
NAS1515M3L		1	212	8
		1	255	8
NAS1801-3-12		1	392	4
NAS1801-3-5		1	174	6
		1	349T	10
NAS1801-3-6		1	186	16
NAS1833-3-400		1	544	2
NAS1834-3-400		1	510	6
		1	542	10
		1	570	3
NAS1834-4-400		1	546	6
NAS1834A3-400		1	510A	6
		1	542A	10
		1	570A	3
NAS1834A4-400		1	546A	6
NAS1834C5-400		1	550	1
NAS1836-08-11		1	540	4
NAS1836-3-07		1	498	5
		1	504	5
NAS1836-3-09		1	167P	18
		1	168A	4
		1	169A	3
		1	169B	4
NAS1836-3-09		1	169C	3
NAS1836-3-11		1	99	20
		1	167Q	18
		1	168	4
		1	169	3
		1	512	21
		1	513	6
		1	538	87
		1	538A	66
		1	539	4
		1	575	24
		1	576	4
		1	578	4
		1	600	7

25-28-13

 ILLUSTRATED PARTS LIST
 01.1 Page 1010
 Jan 10/87

PART NUMBER	AIRLINE PART NO.	FIG.	ITEM	TTL REQ
NAS42DD6-6		1	145C	2
NAS43DD3-30		1	196	4
NAS514P1032-4		1	474	3
NAS514P1032-5		1	102	4
		1	140	7
		1	476	1
NAS514P1032-6		1	89	4
NAS514P1032-9		1	480	2
NAS601-3		1	240	8
NAS603-4P		1	150	8
		1	518	8
		1	526	4
NAS620A10L		1	9	5
		1	31	3
		1	128	8
		1	134	8
		1	144	1
		1	152	8
		1	304B	1
		1	304L	6
		1	306	2
		1	307	2
		1	334	32
		1	349W	10
		1	401J	7
		1	404	15
		1	404A	13
		1	416	5
		1	587	14
NAS623-2-2		1	358A	2
NAS623-3-1		1	7	5
		1	29	3
		1	126	8
		1	132	8
		1	142	1
		1	332	31
		1	401	7
		1	402	15
		1	402A	13
		1	415	5
		1	585	14

25-28-13

PART NUMBER	AIRLINE PART NO.	FIG.	ITEM	TTL REQ
NAS623-3-1W		1	81	4
NAS623-3-2		1	304	2
		1	304J	6
		1	305	2
NAS623-3-3		1	304A	1
		1	333	1
NAS623-3-7		1	158	6
NAS6603-10		1	10	6
NAS6603-2		1	316	16
NAS6603-3		1	354	2
		1	372	10
NAS6603-9		1	11	6
		1	33	6
NAS76A3-007N		1	262	4
NAS76A3-009N		1	232	4
NAS77A3-15N		1	248	8
		1	260	16
NAS77A3-24N		1	220	4
NAS77A3-68N		1	222	4
NS103198-02		1	360	2
NS103199-02		1	378	10
NS103203-02		1	338	14
NS202101-02		1	15	6
		1	37	6
		1	416M	3
		1	472	4
NS202101-82		1	114	2
		1	359G	2
PSFW10F6DS05WH		1	184	24
RMA9207-3		1	360	2
RMF9201-3		1	338	14
RMLH9075-3W		1	15	6
		1	37	6
		1	416M	3
		1	472	4

25-28-13

 ILLUSTRATED PARTS LIST
 01.1 Page 1012
 Jan 10/87

PART NUMBER	AIRLINE PART NO.	FIG.	ITEM	TTL REQ
RMLH9075-82W		1	114	2
		1	359G	2
SALPYT6-16		1	440	2
SL240-3-1		1	170	6
SL6164-08-4		1	145	2
SL618-3A		1	98	4
		1	167	24
		1	548	15
		1	548A	4
		1	549	4
		1	549A	5
		1	577	4
S413T301-2		1	301A	4
T6C524JM		1	432	1
T6S1032J		1	15	6
		1	37	6
		1	416M	3
		1	472	4
T6S832J		1	114	2
		1	359G	2
T8077S1032		1	360	2
T8078S1032		1	378	10
T8091S1032		1	338	14
T8114S1032S		1	336	4
UI19136-2B8		1	276	4
		1	288	4
UI19136-6B8		1	290	12
VN151A1-02		1	336	4
VN152A1-02		1	338	14
VN201A1-02		1	360	2
VN203A1-02		1	378	10
VN303A02		1	15	6
		1	37	6
		1	416M	3
		1	472	4

25-28-13

PART NUMBER	AIRLINE PART NO.	FIG.	ITEM	TTL REQ
VN303A82		1	114	2
		1	359G	2
WC2510-24		1	426A	1
WG4E		1	444	1
WS1-332A8		1	390	5
10-60779-112L		1	448	1
109LH9075-5W		1	432	1
1281-1		1	422A	1
130061		1	170	6
2DCC6		1	442	2
2055051		1	327	1
		1	328	7
2055144		1	381	12
		1	382	11
412T1000-10SP		1	349	1
412T1000-15SP		1	347A	1
412T1000-16SP		1	349A	1
412T1000-21SP		1	347B	1
412T1000-22SP		1	349B	1
412T1000-5SP		1	346	1
412T1000-57SP		1	346J	1
412T1000-58SP		1	348J	2
412T1000-6SP		1	348	2
412T1000-9SP		1	347	1
412T1001-10		1	366	1
412T1001-3		1	350	1
412T1001-4		1	352	1
412T1001-9		1	364	1
412T1002-13		1	393	1
412T1002-14		1	393A	1
412T1002-151SP		1	384J	1
412T1002-152SP		1	386J	1
412T1002-153		1	396	1
412T1002-154		1	397	1
412T1002-19SP		1	388	1
412T1002-24SP		1	387	1
412T1002-25SP		1	383	1
412T1002-26SP		1	383A	1
412T1002-27		1	394	1
412T1002-28		1	394A	1
412T1002-44SP		1	389	1
412T1002-45SP		1	385	1
412T1002-46SP		1	385A	1
412T1002-47		1	395	1
412T1002-48		1	395A	1

25-28-13

 ILLUSTRATED PARTS LIST
 01.1 Page 1014
 Jan 10/87

PART NUMBER	AIRLINE PART NO.	FIG.	ITEM	TTL REQ
412T1002-5SP		1	384	1
412T1002-59SP		1	383B	1
412T1002-6SP		1	386	1
412T1002-60SP		1	383C	1
412T1002-61		1	393B	1
412T1002-62		1	394B	1
412T1002-63SP		1	387A	1
412T1003-1		1	370	5
412T1003-2		1	368	5
412T1003-3		1	380	5
412T1003-4		1	380A	5
412T1004-125SP		1	313J	1
412T1004-126SP		1	315J	1
412T1004-127		1	323J	1
412T1004-128		1	323M	1
412T1004-13		1	321	1
412T1004-14		1	322	1
412T1004-19SP		1	320	1
412T1004-23		1	322A	1
412T1004-24		1	324A	1
412T1004-25SP		1	320A	1
412T1004-33		1	323	1
412T1004-34		1	325	1
412T1004-35SP		1	320B	1
412T1004-5SP		1	312	1
412T1004-57SP		1	312B	1
412T1004-58SP		1	314B	1
412T1004-59		1	324B	1
412T1004-6SP		1	314	1
412T1004-60		1	324C	1
412T1004-61SP		1	320C	1
412T1004-75SP		1	312A	1
412T1004-76SP		1	314A	1
412T1004-77SP		1	313	1
412T1004-78SP		1	315	1

25-28-13

PART NUMBER	AIRLINE PART NO.	FIG.	ITEM	TTL REQ
412T1008-4		1	326	1
412T2010-1		1	422	1
412T2010-2		1	434	1
412T2010-3		1	436	1
412T2011-1		1	438	1
412T2011-2		1	446	1
412T2012-1		1	452	1
412T2012-2		1	450	1
412T2014-1		1	302	1
		1	303	1
412T2014-2		1	310	1
412T2014-2		1	311	1
412T2014-3		1	303J	1
412T2014-4		1	310J	1
412T2045-1		1	456	1
412T2045-2		1	458	1
412T2046-1		1	468	1
412T2046-2		1	470	1
412T3108-1		1	3A	1
412T3108-11		1	43	1
412T3108-12		1	45	1
412T3108-13		1	3	1
412T3108-14		1	5	1
412T3108-15		1	21	1
412T3108-16		1	23	1
412T3108-19		1	16	1
412T3108-2		1	5A	1
412T3108-20		1	16A	1
412T3108-21		1	4	1
412T3108-22		1	6	1
412T3108-23		1	22	1
412T3108-24		1	24	1
412T3108-5		1	25	1
412T3108-6		1	27	1
412T3108-7		1	21A	1

25-28-13

 ILLUSTRATED PARTS LIST
 01.1 Page 1016
 Jan 10/87

PART NUMBER	AIRLINE PART NO.	FIG.	ITEM	TTL REQ
412T3108-8		1	23A	1
412T3109-1		1	398A	1
412T3109-10		1	414	1
412T3109-11		1	408A	1
412T3109-12		1	410A	1
412T3109-17		1	408	1
412T3109-18		1	410	1
412T3109-19		1	418	1
412T3109-2		1	400A	1
412T3109-20		1	420	1
412T3109-21		1	407	1
412T3109-37		1	403	1
412T3109-38		1	403A	1
412T3109-39		1	303M	1
412T3109-40		1	303N	1
412T3109-41		1	311J	1
412T3109-42		1	311M	1
412T3109-7		1	398	1
412T3109-8		1	400	1
412T3109-9		1	412	1
413T1002-101SP		1	1G	RF
413T1002-102SP		1	2D	RF
413T1002-123SP		1	1H	RF
413T1002-126SP		1	2E	RF
413T1002-147SP		1	1J	RF
413T1002-159SP		1	1K	RF
413T1002-171SP		1	1L	RF
413T1002-172SP		1	2F	RF
413T1002-271SP		1	1M	RF
413T1002-297		1	1N	RF
413T1002-298SP		1	2G	RF
413T1002-65SP		1	1	RF
413T1002-66SP		1	2	RF
413T1002-67SP		1	1A	RF
413T1002-68SP		1	2A	RF

25-28-13

PART NUMBER	AIRLINE PART NO.	FIG.	ITEM	TTL REQ
413T1002-69SP		1	1B	RF
413T1002-70SP		1	2B	RF
413T1002-71SP		1	1C	RF
413T1002-77SP		1	1D	RF
413T1002-89SP		1	1E	RF
413T1002-94SP		1	2C	RF
413T1007-10SP		1	97A	2
413T1007-65SP		1	47	2
413T1007-85SP		1	47A	2
413T1010-1		1	91	4
413T1011-1		1	514	2
		1	516	1
413T1011-3		1	522	1
413T1011-4		1	524	1
413T1011-5		1	517	1
413T1012-19		1	591	1
413T1012-20		1	596	1
413T1012-7		1	590	1
413T1012-8		1	595	1
413T1013-105		1	552	1
413T1013-106		1	554	1
413T1013-11		1	490	1
413T1013-12		1	492	1
413T1013-155		1	490A	1
413T1013-157		1	530A	1
413T1013-159		1	552A	1
413T1013-180		1	164	1
413T1013-181		1	162	2
413T1013-193		1	166	2
413T1013-207		1	154	1
413T1013-208		1	156	1
413T1013-21		1	496	1
413T1013-22		1	494	1
413T1013-229		1	490B	1
413T1013-23		1	555	1
413T1013-231		1	530B	1
413T1013-237		1	552B	1
413T1013-239		1	490C	1
413T1013-24		1	560	1
413T1013-243		1	154A	1
413T1013-244		1	156A	1
413T1013-254		1	492A	1
413T1013-256		1	532A	1
413T1013-33		1	530	1
413T1013-34		1	532	5

25-28-13

 ILLUSTRATED PARTS LIST
 01.1 Page 1018
 Jan 10/87

PART NUMBER	AIRLINE PART NO.	FIG.	ITEM	TTL REQ
413T1013-357		1	532B	1
413T1013-395		1	532C	1
413T1013-397		1	157	1
413T1013-419		1	493	1
413T1013-420		1	493G	1
413T1013-421		1	532D	1
413T1013-422		1	532E	1
413T1013-43		1	154C	1
413T1013-44		1	156C	1
413T1013-51		1	506	1
413T1013-52		1	508	1
413T1013-631		1	507	1
413T1013-632		1	509	1
413T1013-661		1	491	1
413T1013-662		1	491J	1
413T1013-663		1	531	1
413T1013-664		1	533	5
413T1013-84		1	162A	2
413T1013-85		1	164A	1
413T1013-88		1	166B	2
413T1013-91		1	500	1
413T1013-92		1	502	1
413T1013-99		1	166L	2
413T1014-1		1	124	1
413T1014-2		1	130	1
413T1014-3		1	146	1
413T1014-4		1	148	1
413T1014-5		1	172	6
413T1015-11		1	136	1
413T1015-12		1	138	1
413T1015-21		1	144G	1
413T1015-22		1	144M	1
413T1015-23		1	145G	1
413T1015-24		1	145M	1
413T1016-3		1	536	1

25-28-13

ILLUSTRATED PARTS LIST
01.1 Page 1019
Jan 10/87

PART NUMBER	AIRLINE PART NO.	FIG.	ITEM	TTL REQ
413T1017-10		1	189A	2
413T1017-11		1	180G	2
413T1017-12		1	182G	2
413T1017-13		1	189B	2
413T1017-14		1	189C	2
413T1017-15		1	180A	2
413T1017-16		1	182A	2
413T1017-17		1	180H	2
413T1017-18		1	182H	2
413T1017-19		1	189D	2
413T1017-20		1	189F	2
413T1017-21		1	189H	2
413T1017-22		1	189K	2
413T1017-23		1	180B	2
		1	183	2
413T1017-24		1	182B	2
		1	183G	2
413T1017-25		1	180J	2
413T1017-26		1	182J	2
413T1017-27		1	189E	2
413T1017-28		1	189G	2
413T1017-29		1	189J	2
413T1017-3		1	296	4
413T1017-30		1	189L	2
413T1017-7		1	180	2
413T1017-8		1	182	2
413T1017-9		1	189	2
413T1020-1		1	246	4
413T1020-2		1	252	4
413T1020-4		1	246B	4
413T1020-5		1	252A	4
413T1021-1		1	258	4
413T1021-2		1	264	4
413T1022-10		1	238	2
413T1022-11		1	228B	2

25-28-13

 ILLUSTRATED PARTS LIST
 01.1 Page 1020
 Jan 10/87

PART NUMBER	AIRLINE PART NO.	FIG.	ITEM	TTL REQ
413T1022-12		1	230B	2
413T1022-13		1	236A	2
413T1022-14		1	238A	2
413T1022-17		1	236B	2
413T1022-18		1	238B	2
413T1022-19		1	228E	2
413T1022-20		1	230E	2
413T1022-7		1	228	2
413T1022-8		1	230	2
413T1022-9		1	236	2
413T1023-1		1	214	2
413T1023-2		1	216	2
413T1023-3		1	224	2
413T1023-4		1	226	2
413T1024-2		1	100	2
413T1028-2		1	83A	2
413T1028-4		1	79A	2
413T1030-3		1	122	2
413T1030-4		1	122A	2
413T1081-25		1	329A	1
413T1081-26		1	330A	1
413T1081-27		1	342A	1
413T1081-28		1	344A	1
413T1083-10		1	204A	4
413T1083-11		1	254A	4
413T1083-2		1	206	4
413T1083-3		1	204	4
413T1083-5		1	242	8
413T1083-6		1	254	4
413T1083-8		1	266	4
413T1083-9		1	206A	4
413T1084-1		1	256	4
413T1085-3		1	210	4
413T1085-4		1	208	8
413T1086-10		1	272	2

25-28-13

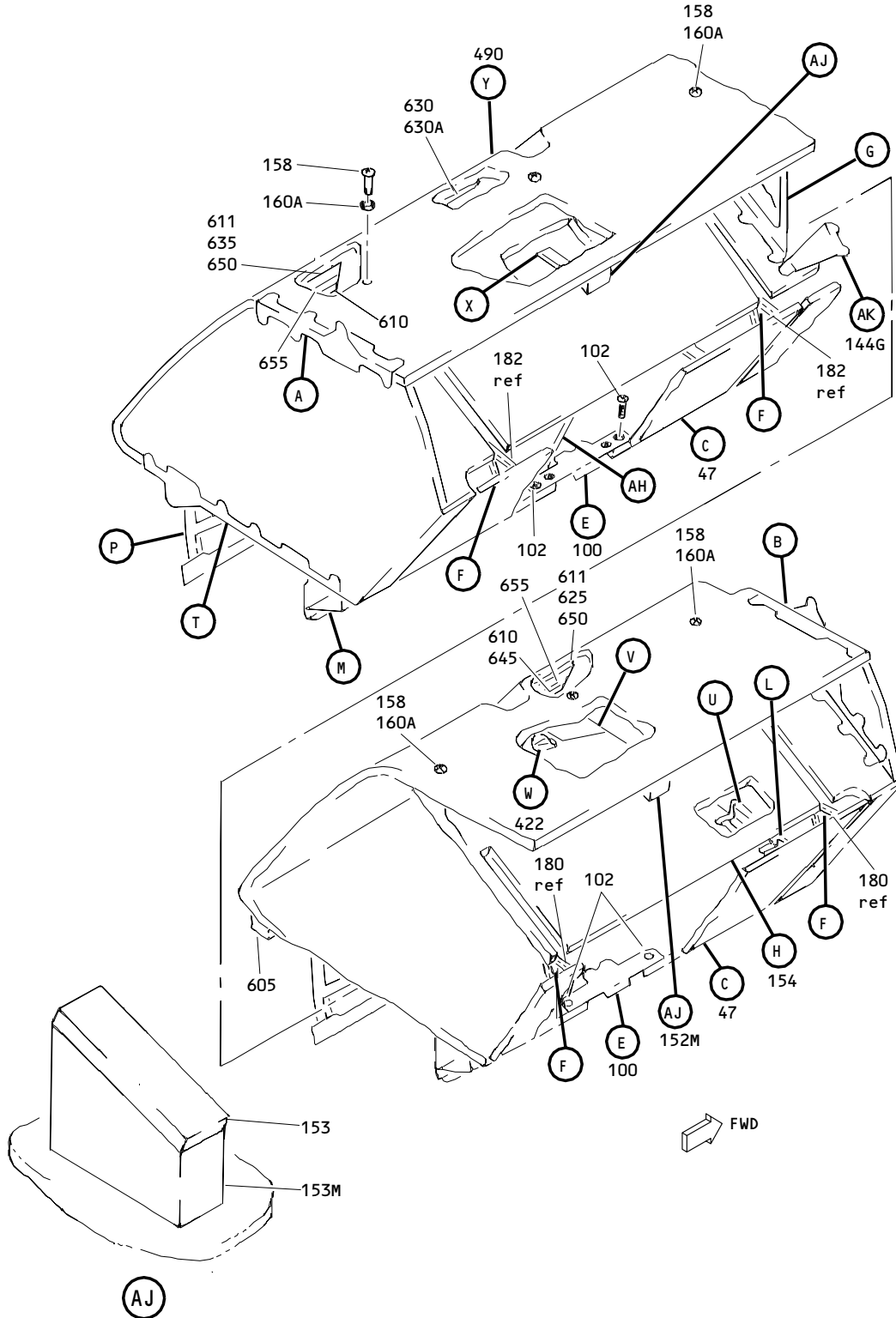
PART NUMBER	AIRLINE PART NO.	FIG.	ITEM	TTL REQ
413T1086-11		1	278	2
413T1086-12		1	280	2
413T1086-13		1	190	2
413T1086-14		1	192	2
413T1086-15		1	282A	2
413T1086-16		1	284A	2
413T1086-17		1	292A	2
413T1086-18		1	294A	2
413T1086-19		1	190G	2
		1	191	2
413T1086-20		1	192G	2
		1	193	2
413T1086-21		1	195	4
413T1086-23		1	285A	1
413T1086-24		1	286A	1
413T1086-25		1	293A	1
413T1086-26		1	295A	1
413T1086-27		1	285	1
413T1086-28		1	286	1
413T1086-29		1	293	1
413T1086-3		1	282	2
413T1086-30		1	295	1
413T1086-31		1	191A	2
413T1086-32		1	193A	2
413T1086-35		1	270B	2
413T1086-36		1	272B	2
413T1086-37		1	278A	2
413T1086-38		1	280A	2
413T1086-4		1	284	2
413T1086-5		1	292	2
413T1086-6		1	294	2
413T1086-7		1	198	4
413T1086-9		1	270	2
413T1087-1		1	244	4
413T1090-1		1	110	2
413T1090-3		1	106	2
413T1091-1		1	112	2
413T1092-2		1	120	2
413T1093-2		1	108	2
413T1093-3		1	85	2
413T1095-4		1	488	1
413T1095-5		1	482	1
413T1095-7		1	478	1
413T1095-9		1	478A	1
413T1098-1		1	580	7

25-28-13

 ILLUSTRATED PARTS LIST
 01.1 Page 1022
 Jan 10/87

PART NUMBER	AIRLINE PART NO.	FIG.	ITEM	TTL REQ
413T1118-3		1	93	2
413T1118-4		1	94	2
413T1127-1		1	152M	2
413T1127-2		1	153M	2
413T1127-3		1	153	2
413T1132-1		1	88	2
413T1136-31		1	154D	1
413T1136-32		1	156D	1
413T1136-33		1	154F	1
413T1136-34		1	156F	1
413T1136-35		1	157A	1
413T1136-61		1	166A	1
413T1136-65		1	154G	1
413T1136-66		1	156G	1
5R3-1		1	300	4
5S1-6		1	200	4
5S3-2		1	202A	4
55282		1	444	1
6035-04BR0219		1	276A	4
		1	288A	4
6041-3BR0375		1	290A	12
62547-10-24		1	426A	1
96-02		1	15	6
		1	37	6
		1	416M	3
		1	472	4
96-82		1	114	2
		1	359G	2
97E054		1	432	1
9994		1	180K	2
		1	182K	2
		1	183H	2

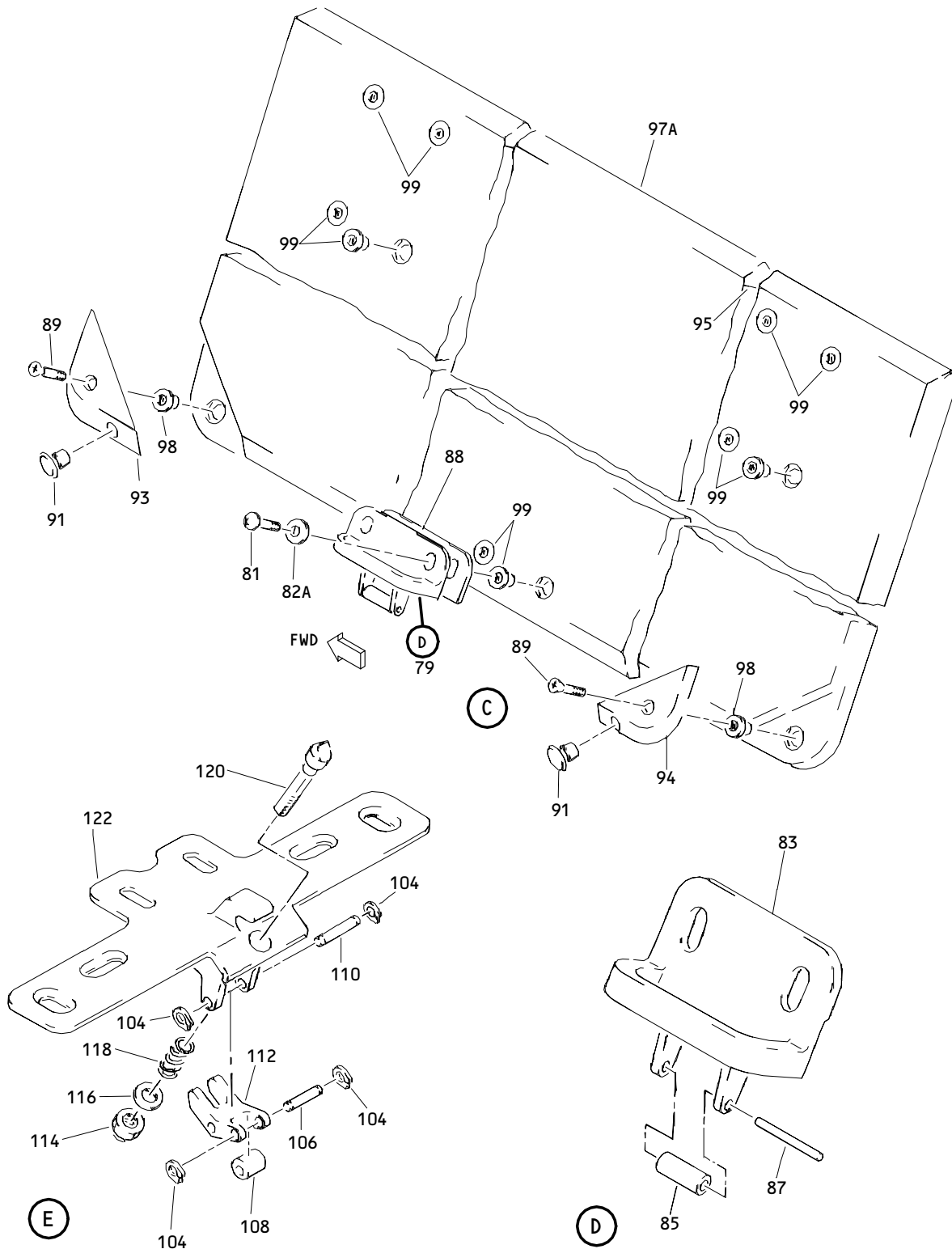
25-28-13



Outboard Overhead Storage 65 Inch Bin Assembly
 Figure 1 (Sheet 1)

25-28-13

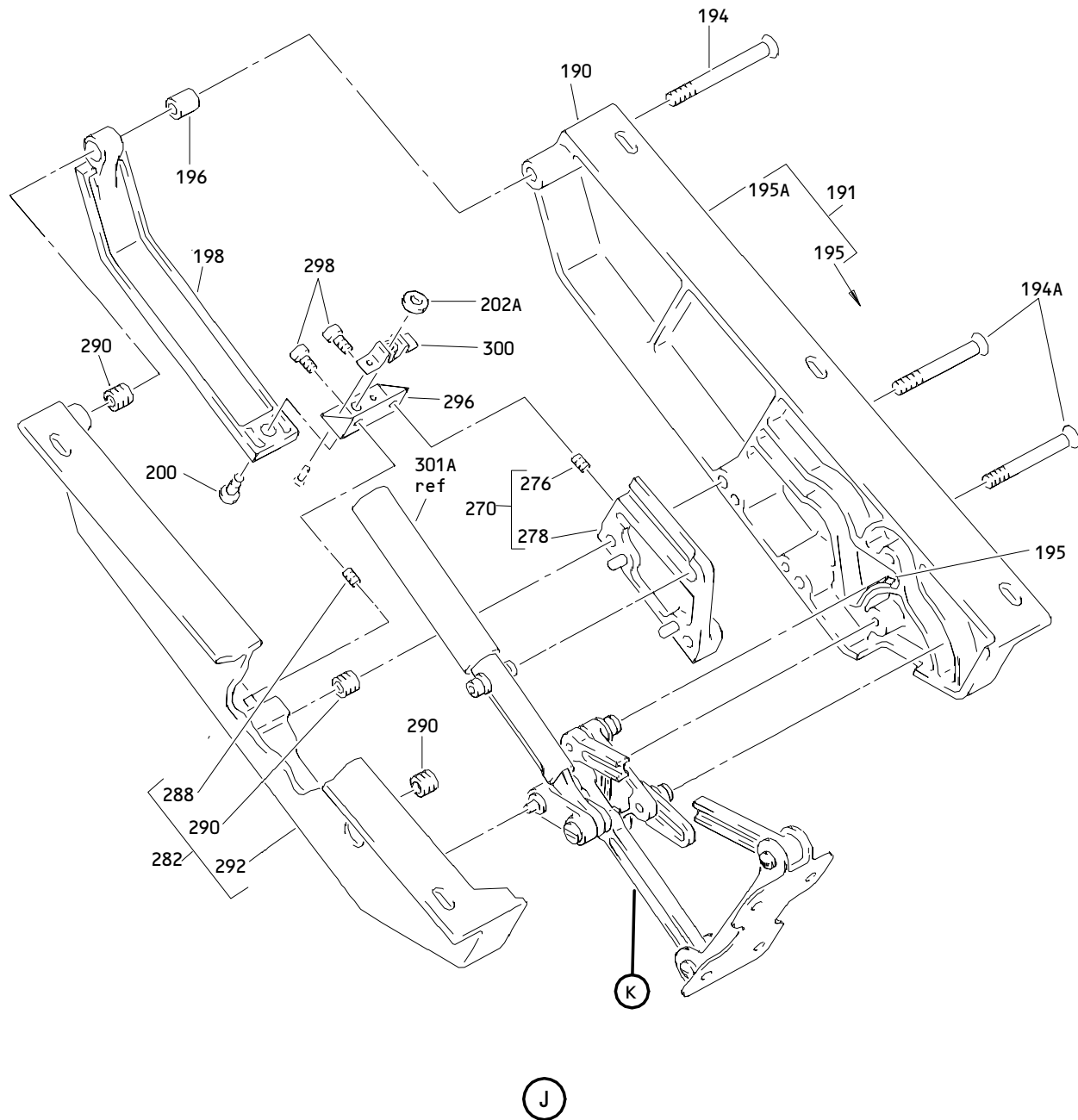
ILLUSTRATED PARTS LIST
 01.1 Page 1024
 Oct 01/91



Outboard Overhead Storage 65 Inch Bin Assembly
 Figure 1 (Sheet 3)

25-28-13

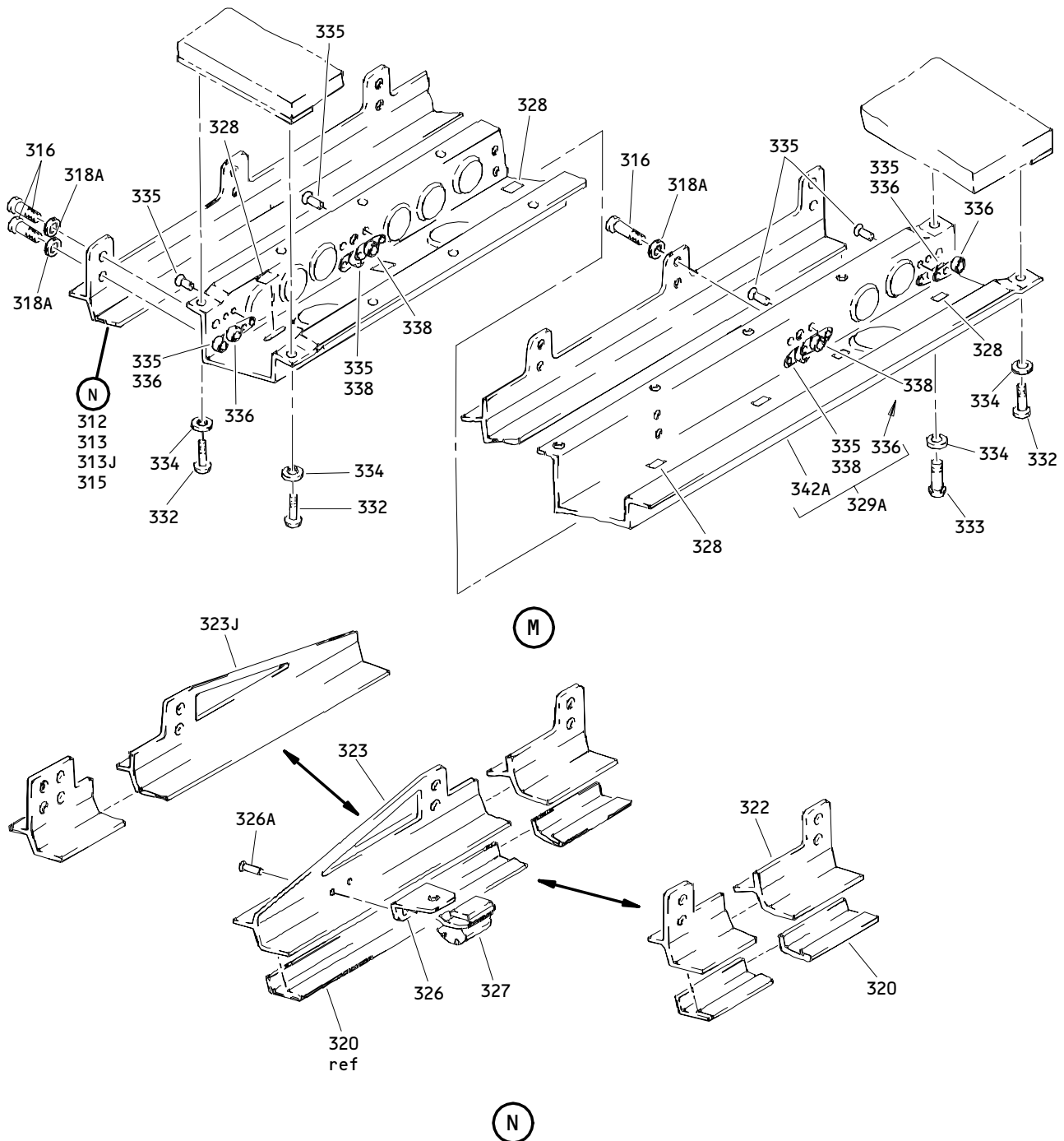
ILLUSTRATED PARTS LIST
 01.1 Page 1026
 Oct 01/91



Outboard Overhead Stowage 65 Inch Bin Assembly
 Figure 1 (Sheet 5)

25-28-13

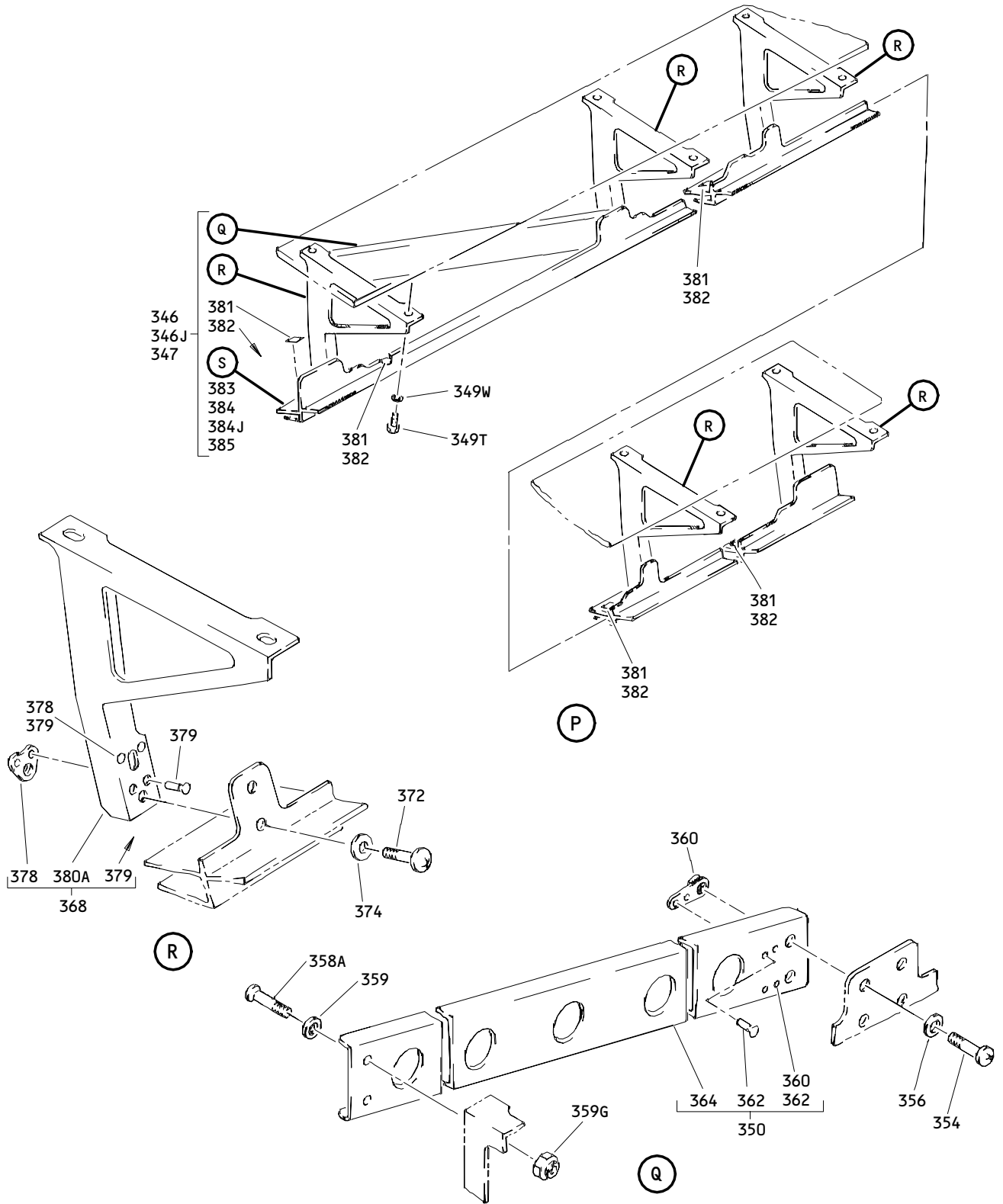
ILLUSTRATED PARTS LIST
 01.1 Page 1028
 Oct 01/91



Outboard Overhead Storage 65 Inch Bin Assembly
 Figure 1 (Sheet 7)

25-28-13

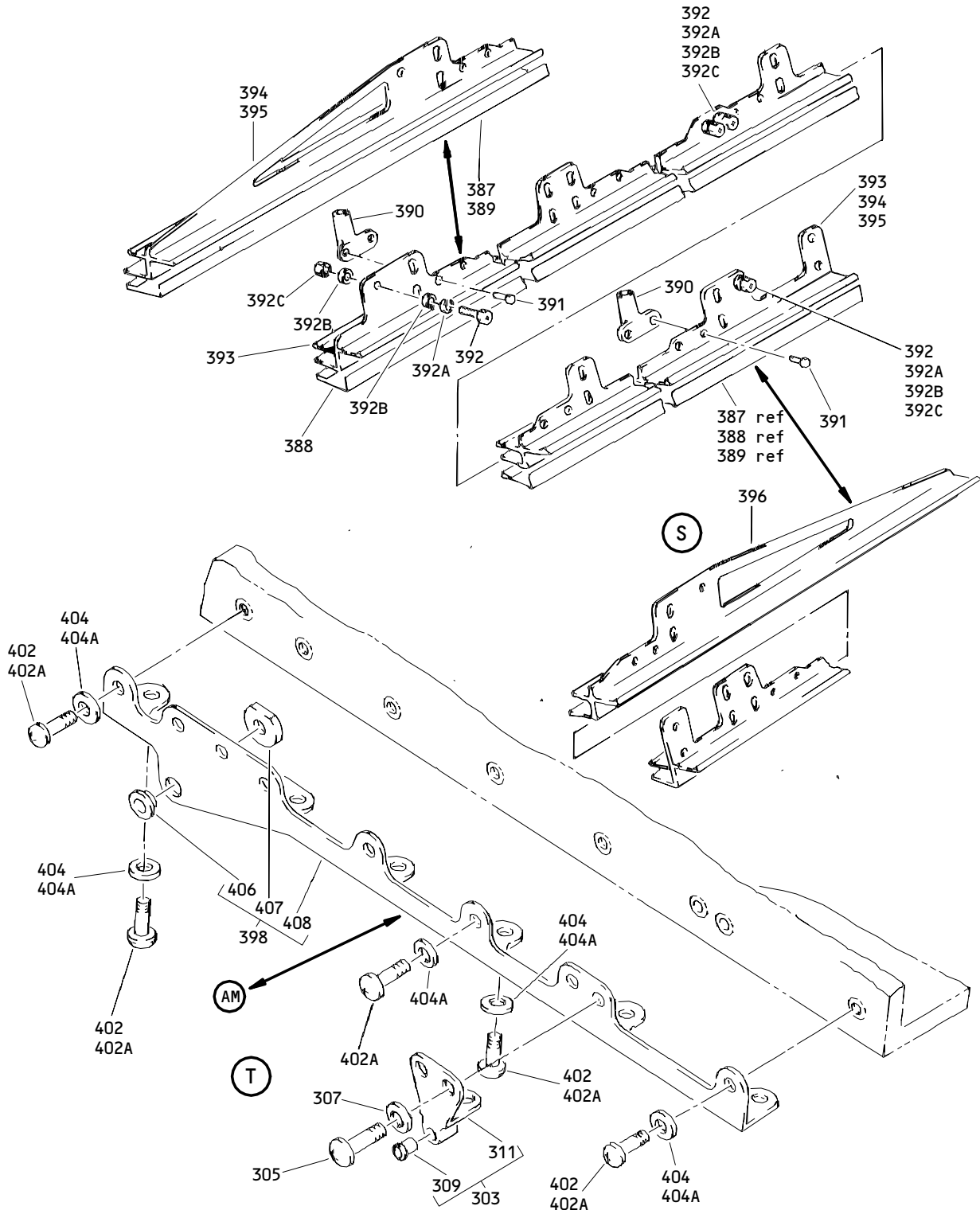
ILLUSTRATED PARTS LIST
 01.1 Page 1030
 Oct 01/91



Outboard Overhead Stowage 65 Inch Bin Assembly
Figure 1 (Sheet 8)

25-28-13

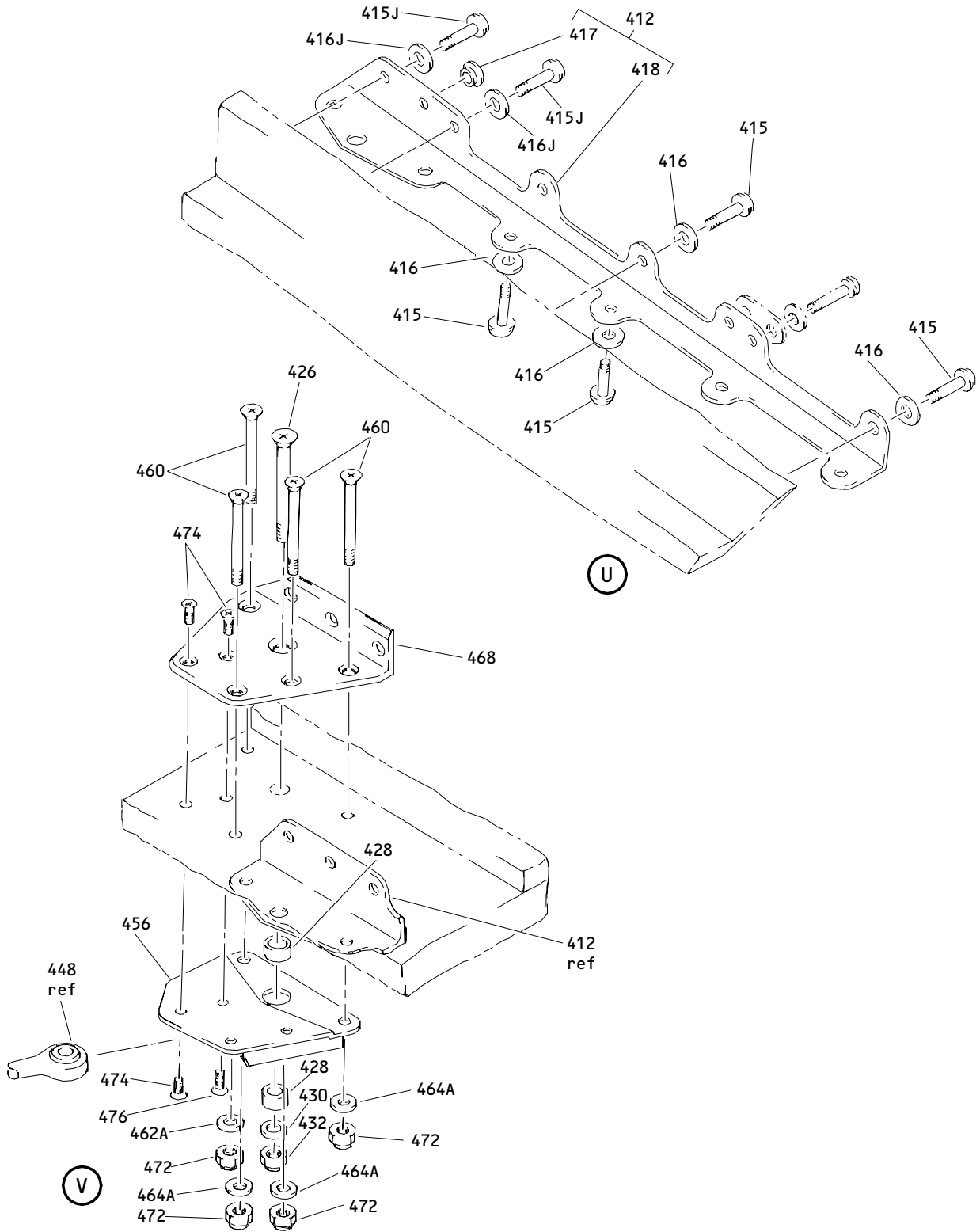
ILLUSTRATED PARTS LIST
01.1 Page 1031
Oct 01/91



Outboard Overhead Storage 65 Inch Bin Assembly
 Figure 1 (Sheet 9)

25-28-13

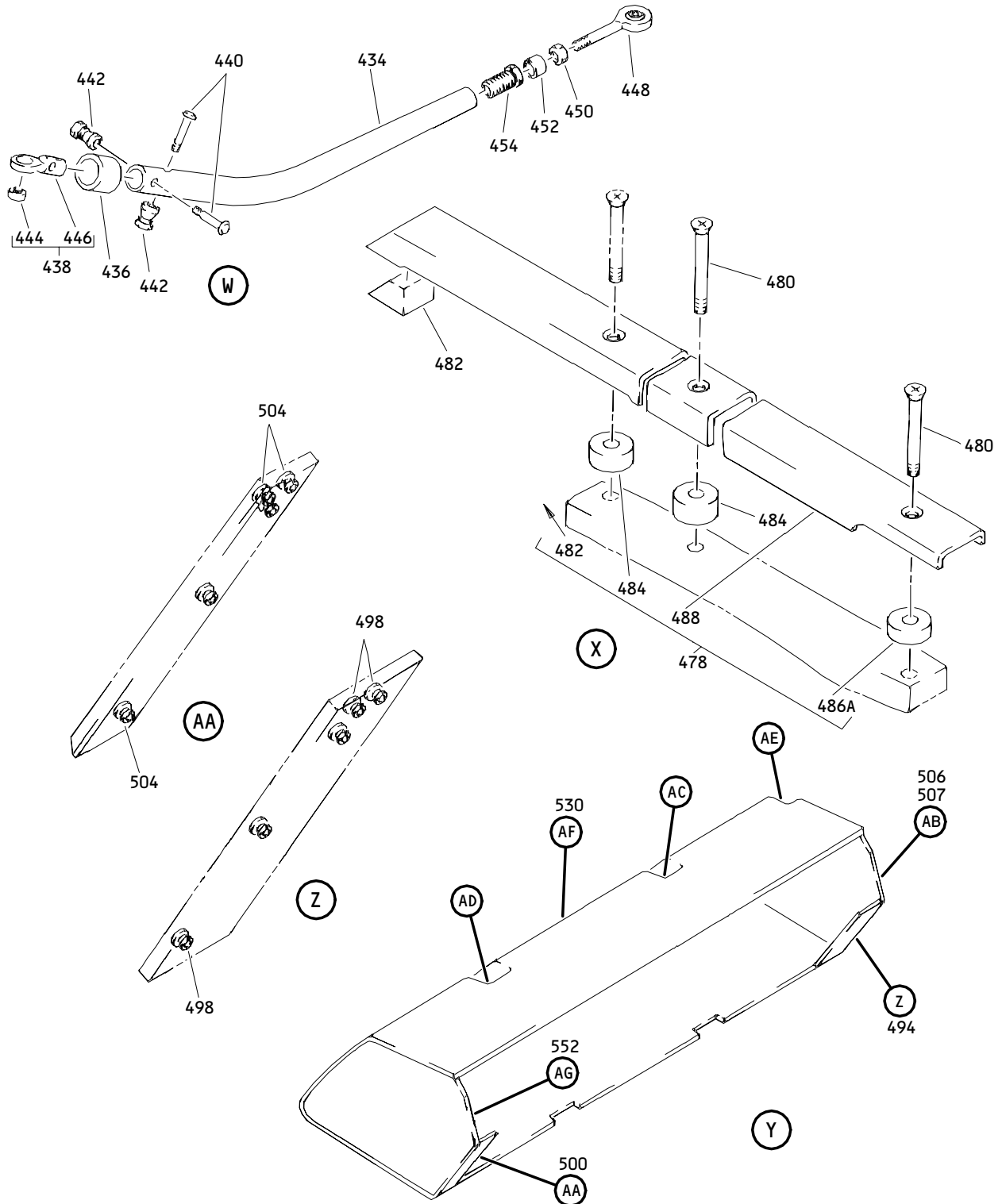
ILLUSTRATED PARTS LIST
 01.1 Page 1032
 Oct 01/91



Outboard Overhead Stowage 65 Inch Bin Assembly
Figure 1 (Sheet 10)

25-28-13

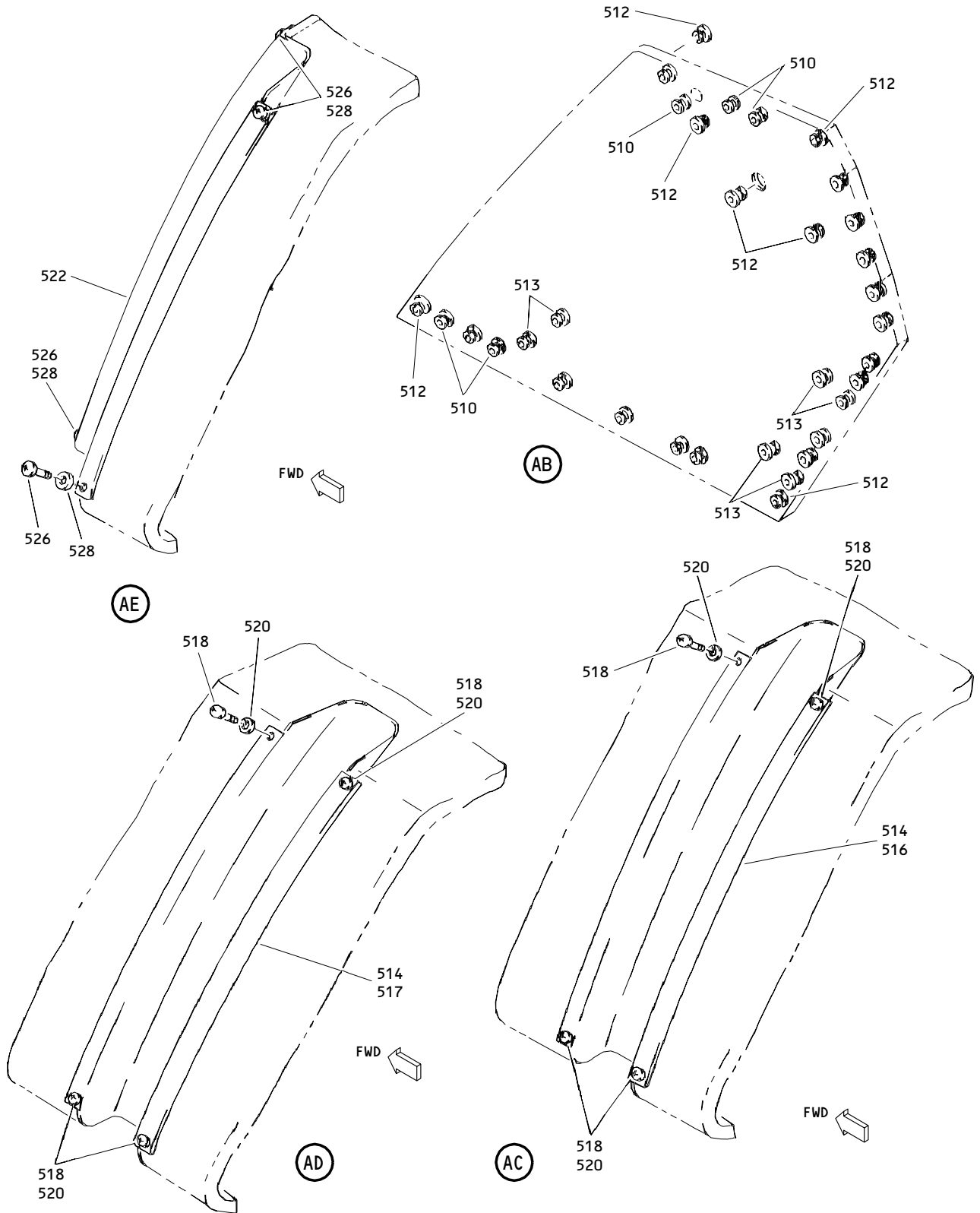
ILLUSTRATED PARTS LIST
01.1 Page 1033
Oct 01/91



Outboard Overhead Storage 65 Inch Bin Assembly
 Figure 1 (Sheet 11)

25-28-13

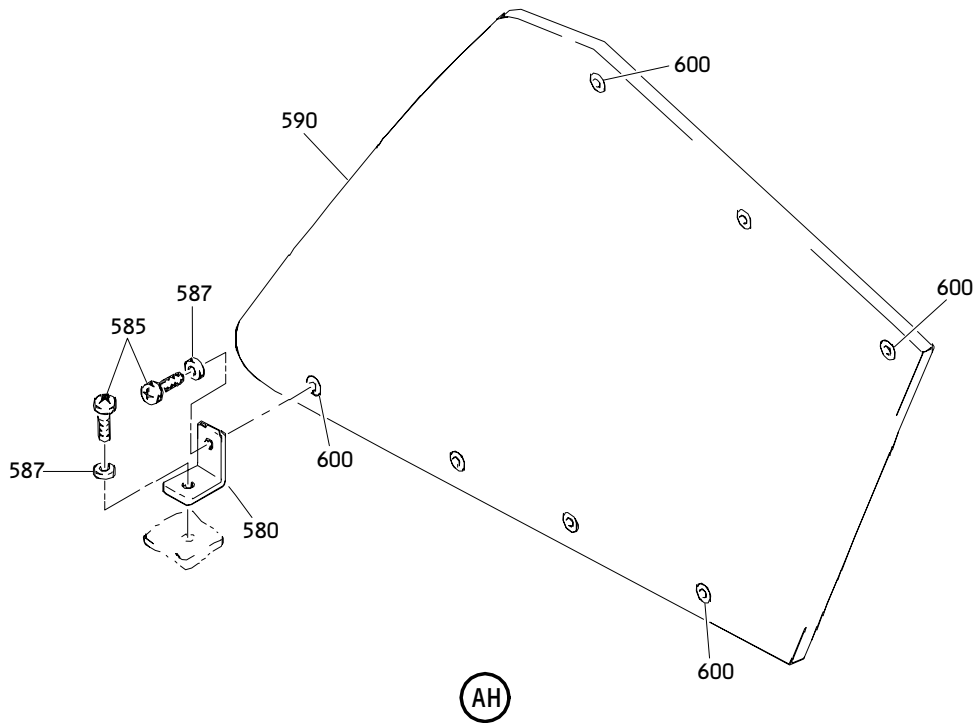
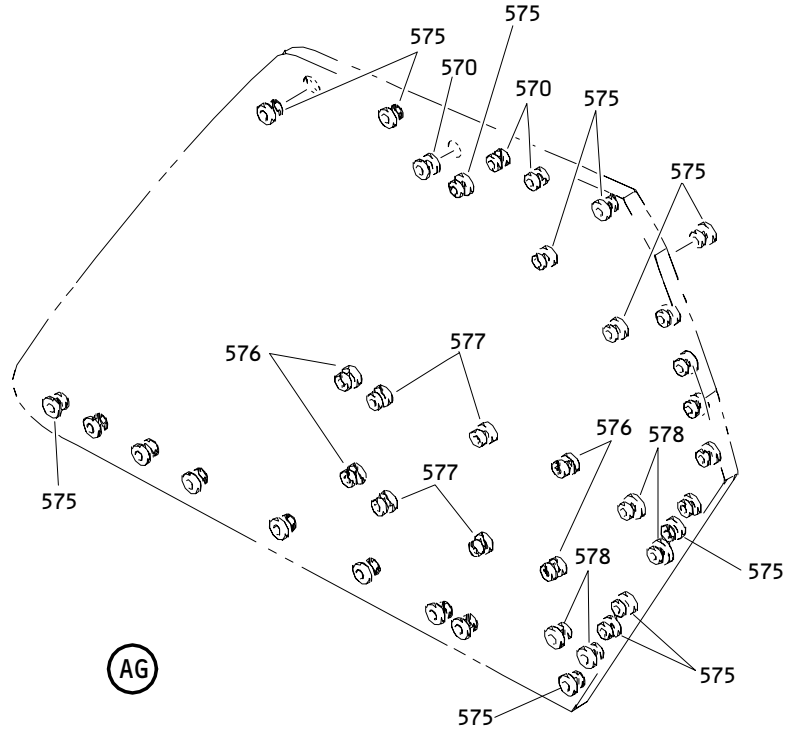
ILLUSTRATED PARTS LIST
 01.1 Page 1034
 Oct 01/91



Outboard Overhead Stowage 65 Inch Bin Assembly
Figure 1 (Sheet 12)

25-28-13

ILLUSTRATED PARTS LIST
01.1 Page 1035
Oct 01/91



Outboard Overhead Stowage 65 Inch Bin Assembly
Figure 1 (Sheet 14)

25-28-13

ILLUSTRATED PARTS LIST
01.1 Page 1037
Oct 01/91

FIG. & ITEM	PART NO.	AIRLINE PART NUMBER	NOMENCLATURE 1234567	EFF CODE	QTY PER ASSY
01- -1	413T1002-65SP		BIN ASSY-OUTBD OVERHEAD STOWAGE (LH)	A	RF
-1A	413T1002-67SP		BIN ASSY-OUTBD OVERHEAD STOWAGE (RH)	B	RF
-1B	413T1002-69SP		BIN ASSY-OUTBD OVERHEAD STOWAGE (LH)	C	RF
-1C	413T1002-71SP		BIN ASSY-OUTBD OVERHEAD STOWAGE (LH)	D	RF
-1D	413T1002-77SP		BIN ASSY-OUTBD OVERHEAD STOWAGE (LH)	E	RF
-1E	413T1002-89SP		BIN ASSY-OUTBD OVERHEAD STOWAGE (LH)	F	RF
-1F	413T1002-93SP		DELETED		
-1G	413T1002-101SP		BIN ASSY-OUTBD OVERHEAD STOWAGE (LH) (POST SB 35-8)	M	RF
-1H	413T1002-123SP		BIN ASSY-OUTBD OVERHEAD STOWAGE (LH)	P	RF
R -1J	413T1002-147SP		BIN ASSY-OUTBD OVERHEAD STOWAGE (LH) (PRE SB 35-8)	R	RF
R -1K	413T1002-159SP		BIN ASSY-OUTBD OVERHEAD STOWAGE (LH)	S	RF
R -1L	413T1002-171SP		BIN ASSY-OUTBD OVERHEAD STOWAGE (LH)	T	RF
R -1M	413T1002-271SP		BIN ASSY-OUTBD OVERHEAD STOWAGE (LH)	V	RF
R -1N	413T1002-297		BIN ASSY-OUTBD OVERHEAD STOWAGE (LH)	W	RF
-2	413T1002-66SP		BIN ASSY-OUTBD OVERHEAD STOWAGE (RH)	H	RF
-2A	413T1002-68SP		BIN ASSY-OUTBD OVERHEAD STOWAGE (RH)	J	RF
-2B	413T1002-70SP		BIN ASSY-OUTBD OVERHEAD STOWAGE (RH)	K	RF

25-28-13

FIG. & ITEM	PART NO.	AIRLINE PART NUMBER	NOMENCLATURE 1234567	EFF CODE	QTY PER ASSY
01- -2C	413T1002-94SP		BIN ASSY-OUTBD OVERHEAD STOWAGE (RH)	L	RF
-2D	413T1002-102SP		BIN ASSY-OUTBD OVERHEAD STOWAGE (RH)	N	RF
-2E	413T1002-126SP		BIN ASSY-OUTBD OVERHEAD STOWAGE (RH)	Q	RF
R -2F	413T1002-172SP		BIN ASSY-OUTBD OVERHEAD STOWAGE (RH)	U	RF
R -2G	413T1002-298SP		BIN ASSY-OUTBD OVERHEAD STOWAGE (RH)	X	RF
R 3	412T3108-13		.FITTING ASSY	A-F,S ,T,V	1
R -3A	412T3108-1		.FITTING ASSY	M,P,R	1
R 4	412T3108-21		.FITTING ASSY	W	1
R -5	412T3108-14		.FITTING ASSY	H-L,Q ,U	1
-5A	412T3108-2		.FITTING ASSY	N	1
R -6	412T3108-22		.FITTING ASSY	X	1
R 7	NAS623-3-1		.SCREW		5
R 9	NAS620A10L		.WASHER		5
R 10	NAS6603-10		.BOLT	W,X	6
R 11	NAS6603-9		.BOLT	A-F, H-V	6
13	AN960KD10L		DELETED		
R 13A	AN960PD10L		.WASHER		12
R 15	H10-3BAC		.NUT- (V15653) (SPEC BACN10JC3) (OPT NS202101-02 (V80539)) (OPT RMLH9075-3W (V72962)) (OPT T6S1032J (V71087)) (OPT VN303A02 (V92215)) (OPT 96-02 (V80539)) (OPT BRH10A3 (V52828)) -----*		6

25-28-13

 ILLUSTRATED PARTS LIST
 01.1 Page 1040
 Jan 10/87

FIG. & ITEM	PART NO.	AIRLINE PART NUMBER	NOMENCLATURE 1234567	EFF CODE	QTY PER ASSY
R 01-16	412T3108-19		.FITTING	W	1
R -16A	412T3108-20		.FITTING	X	1
R 17	BACB28X4C009		..BUSHING- (V23294) (SPEC BACB28X4C009) (OPT BACB28X4C009 (V70265)) (OPT BACB28X4C009 (V94892))	A-F, H-L,Q ,S-V	1
R -17A	BACB28AR06A024A		..BUSHING- (V09455) (SPEC BACB28AR06A024A) (OPT BACB28AR06A024A (V15860)) (OPT BACB28AR06A024A (V50294)) (OPT BACB28AR06A024A (V73134)) (OPT BACB28AR06A024A (V77896)) (OPT BACB28AR06A024A (V97613))	M-P,R	2
R 19	BACB28X4C024		..BUSHING- (V23294) (SPEC BACB28X4C024) (OPT BACB28X4C024 (V70265)) (OPT BACB28X4C024 (V94892))	A-F, H-L,Q ,S-V	1
R 20	BACB28AR06A012A		..BUSHING	W,X	2
R 21	412T3108-15		..FITTING	A-F,S ,T,V	1
R -21A	412T3108-7		..FITTING	M,P,R	1
R 22	412T3108-23		..FITTING	W	1
R -23	412T3108-16		..FITTING	H-L,Q ,U	1
-23A	412T3108-8		..FITTING	N	1
R -24	412T3108-24		..FITTING	X	1
R 25	412T3108-5		.FITTING ASSY	A-F,M ,P, R-T,V ,W	1

25-28-13

FIG. & ITEM	PART NO.	AIRLINE PART NUMBER	NOMENCLATURE 1234567	EFF CODE	QTY PER ASSY
R 01- -27	412T3108-6		.FITTING ASSY	H-L,N ,Q,U, X	1
R 29	NAS623-3-1		ATTACHING PARTS .SCREW		3
R 31	NAS620A10L		.WASHER		3
R 33	NAS6603-9		.BOLT		6
R 35	AN960KD10L		.WASHER		12
R 37	H10-3BAC		.NUT- (V15653) (SPEC BACN10JC3) (OPT NS202101-02 (V80539)) (OPT RMLH9075-3W (V72962)) (OPT T6S1032J (V71087)) (OPT VN303A02 (V92215)) (OPT 96-02 (V80539)) (OPT BRH10A3 (V52828)) -----*		6
R 39	BACB28X4C009		..BUSHING- (V23294) (SPEC BACB28X4C009) (OPT BACB28X4C009 (V70265)) (OPT BACB28X4C009 (V94892))		1

25-28-13

 ILLUSTRATED PARTS LIST
 01.1 Page 1042
 Jan 10/87

FIG. & ITEM	PART NO.	AIRLINE PART NUMBER	NOMENCLATURE 1234567	EFF CODE	QTY PER ASSY
R 01-41	BACB28X4C024		..BUSHING- (V23294) (SPEC BACB28X4C024) (OPT BACB28X4C024 (V70265)) (OPT BACB28X4C024 (V94892))		1
R 43	412T3108-11		..FITTING	A-F, M , P, R-T, V , W	1
R -45	412T3108-12		..FITTING	H-L, N , Q, U, X	1
R 47	413T1007-65SP		.DOOR ASSY- (OPT ITEM 47A)	A-F, H-S	2
R -47A	413T1007-85SP		.DOOR ASSY- (OPT ITEM 47)	A-F, H-S	2
R -47B	413T1007-85SP		.DOOR ASSY	T-X	2
R 79	412T1028-4		DELETED		
R 79A	413T1028-4		..STRIKE ASSY ATTACHING PARTS		1
R 81	NAS623-3-1W		..SCREW		2
R 82	AN960KD10L		..WASHER -----*-----		2
83	412T1028-2		DELETED		
83A	413T1028-2		...STRIKE		1
85	413T1093-3		...ROLLER		1
87	MS20253-2-083		...PIN-HINGE		1
R 88	413T1132-1		..SHIM- (USED ON ITEM 47)	A-F, H-S	1

25-28-13

FIG. & ITEM	PART NO.	AIRLINE PART NUMBER	NOMENCLATURE 1234567	EFF CODE	QTY PER ASSY
01-					
R 89	NAS514P1032-6		..SCREW		2
R 91	413T1010-1		..BUMPER		2
R 93	413T1118-3		..COVER		1
R 94	413T1118-4		..COVER		1
R 95	BMS8-133		..EDGING		1
97	413T1007-10		DELETED		
R 97A	413T1007-10SP		..COVER-DECORATIVE		1
R 98	SL618-3A		..INSERT- (V97393)		2
R 99	NAS1836-3-11		..INSERT		10
R 100	413T1024-2		.LATCH ASSY ATTACHING PARTS		2
R 102	NAS514P1032-5		.SCREW -----*-----		4
104	MS16624-5012		..RING		4
106	413T1090-3		..PIN		1
108	413T1093-2		..ROLLER		1
110	413T1090-1		..PIN		1
112	413T1091-1		..ARM		1
114	H10-08BAC		..NUT- (V15653) (SPEC BACN10JC08) (OPT NS202101-82 (V80539)) (OPT RMLH9075-82W (V72962)) (OPT T6S832J (V71087)) (OPT VN303A82 (V92215)) (OPT 96-82 (V80539)) (OPT BRH10A08 (V52828))		1
116	AN960C8		..WASHER		1
118	MS24585C93		..SPRING		1
120	413T1092-2		..BOLT		1
122	413T1030-3		..BODY- (OPT ITEM 122A)		1

25-28-13

 ILLUSTRATED PARTS LIST
 01.1 Page 1044
 Jan 10/87

BOEING
COMPONENT
MAINTENANCE MANUAL

FIG. & ITEM	PART NO.	AIRLINE PART NUMBER	NOMENCLATURE 1234567	EFF CODE	QTY PER ASSY
R 01-122A	413T1030-4		..BODY- (OPT ITEM 122)		1
R 124	413T1014-1		.BRACKET		1
R 126	NAS623-3-1		ATTACHING PARTS		8
			.SCREW		8
			-----*-----		
R 128	NAS620A10L		.WASHER		8
R 130	413T1014-2		.BRACKET		1
			ATTACHING PARTS		
R 132	NAS623-3-1		.SCREW		8
R 134	NAS620A10L		.WASHER		8
			-----*-----		
R 136	413T1015-11		.BRACKET	A-F,M ,P, R-T,V ,W	1
R -138	413T1015-12		.BRACKET	H-L,N ,Q,U, X	1
			ATTACHING PARTS		
R 140	NAS514P1032-5		.SCREW		7
R 142	NAS623-3-1		.SCREW		1
R 144	NAS620A10L		.WASHER		1
			-----*-----		
	144F	413T1015-17	DELETED		
R 144G	413T1015-21		.BRACKET ASSY	A-F,M ,P, R-T,V ,W	1
	-144L	413T1015-18	DELETED		
R -144M	413T1015-22		.BRACKET ASSY	H-L,N ,Q,U, X	1
R 145	SL6164-08-4		..STUD- (V97393)		2
R 145C	NAS42DD6-6		..SPACER		2
	145F	413T1015-19	DELETED		
R 145G	413T1015-23		..BRACKET	A-F,M ,P, R-T,V ,W	1
	-145L	413T1015-20	DELETED		
R -145M	413T1015-24		..BRACKET	H-L,N ,Q,U, X	1

25-28-13

ILLUSTRATED PARTS LIST
01.1 Page 1045
Jan 10/87


BOEING
 COMPONENT
 MAINTENANCE MANUAL

 413T1002
 DASH NUMBERS LIMITED

FIG. & ITEM	PART NO.	AIRLINE PART NUMBER	NOMENCLATURE 1234567	EFF CODE	QTY PER ASSY
01-					
R 146	413T1014-3		.BRACKET-END		1
R 148	413T1014-4		.SUPPORT-END		1
			ATTACHING PARTS		
R 150	NAS603-4P		.SCREW		8
R 152	NAS620A10L		.WASHER		8
			-----*-----		
R 152M	413T1127-1		.STOP ASSY	P,Q	2
R 153	413T1127-3		..PAD	P,Q	1
R 153M	413T1127-2		..BLOCK	P,Q	1
R 154	413T1013-207		.PANEL ASSY-HINGE (OPT ITEM 154D)	B-F,M ,P	1
R -154A	413T1013-243		.PANEL ASSY-HINGE (OPT ITEM 154F)	R	1
R -154B	413T1013-207		.PANEL ASSY-HINGE (OPT ITEMS 154C, 154E)	A	1
R -154C	413T1013-43		.PANEL ASSY-HINGE (OPT ITEMS 154B, 154E)	A	1
R -154D	413T1136-31		.PANEL ASSY-HINGE (OPT ITEM 154)	B-F,M ,P	1
R -154E	413T1136-31		.PANEL ASSY-HINGE (OPT ITEMS 154B, 154C)	A	1
R -154F	413T1136-33		.PANEL ASSY-HINGE (OPT ITEM 154A)	R	1
R -154G	413T1136-65		.PANEL ASSY-HINGE	T	1
R -154H	413T1136-31		.PANEL ASSY-HINGE	V,W	1
R -156	413T1013-208		.PANEL ASSY-HINGE (OPT ITEM 156D)	J,K,N ,Q	1
-156A	413T1013-244		.PANEL ASSY-HINGE (OPT ITEM 156F)	L	1
R -156B	413T1013-208		.PANEL ASSY-HINGE (OPT ITEMS 156C, 156E)	H	1
R -156C	413T1013-44		.PANEL ASSY-HINGE (OPT ITEMS 156B, 156E)	H	1
R -156D	413T1136-32		.PANEL ASSY-HINGE (OPT ITEM 156)	J,K,N ,Q	1
R -156E	413T1136-32		.PANEL ASSY-HINGE (OPT ITEMS 156B, 156C)	H	1
R -156F	413T1136-34		.PANEL ASSY-HINGE (OPT ITEM 156A)	L	1
R -156G	413T1136-66		.PANEL ASSY-HINGE	U	1
R -156H	413T1136-32		.PANEL ASSY-HINGE	X	1

25-28-13

 ILLUSTRATED PARTS LIST
 01.1 Page 1046
 Jan 10/87

 **BOEING**
COMPONENT
MAINTENANCE MANUAL

FIG. & ITEM	PART NO.	AIRLINE PART NUMBER	NOMENCLATURE 1234567	EFF CODE	QTY PER ASSY
R 01-157	413T1013-397		.PANEL ASSY-HINGE (OPT ITEM 157A)	S	1
R -157A	413T1136-35		.PANEL ASSY-HINGE (OPT ITEM 157) ATTACHING PARTS	S	1
R 158	NAS623-3-7		.SCREW		6
R 160	AN96OKD10L		DELETED		
R 160A	AN96OPD10L		.WASHER		6
R 162	413T1013-181		-----*----- ..TRIM-EDGE (USED ON ITEMS 154, 154A, 154B, 156, 156A, 156B, 157)	A-F, H-S	2
R -162A	413T1013-84		..TRIM-EDGE (USED ON ITEMS 154C, 156C)	A,H	2
R 164	413T1013-180		..TRIM-EDGE (USED ON ITEMS 154, 154A, 154B, 156, 156A, 156B, 157)	A-F, H-S	1
R -164A	413T1013-85		..TRIM-EDGE (USED ON ITEMS 154C, 156C)	A,H	1
R 166	413T1013-193		..TRIM-EDGE (USED ON ITEMS 154, 154A, 154B, 156, 156A, 156B, 157)	A-F, H-S	2
R 166A	413T1136-61		..TRIM-EDGE (USED ON ITEMS 154D, 154E, 154F, 154H, 156D, 156E, 156F, 156H, 157A)		AR
R -166B	413T1013-88		..TRIM-EDGE (USED ON ITEMS 154C, 156C)	A,H	2
R 166L	413T1013-99		..MEMBER-EDGE (USED ON ITEMS 154C, 156C)	A,H	2

25-28-13

ILLUSTRATED PARTS LIST
01.1 Page 1047
Jan 10/87

FIG. & ITEM	PART NO.	AIRLINE PART NUMBER	NOMENCLATURE 1234567	EFF CODE	QTY PER ASSY
R 01-167	SL618-3A		..INSERT- (V97393)		24
R 167P	NAS1836-3-09		..INSERT- (USED ON ITEMS 154B, 154E, 154H, 156B, 156E, 156H)		18
R 167Q	NAS1836-3-11		..INSERT- (USED ON ITEMS 154C, 156C)	A,H	18
R 168	NAS1836-3-11		..INSERT- (USED ON ITEMS 154, 154A, 154B, 154C, 156, 156A, 156B, 156C, 157)	A-F, H-S	4
R 168A	NAS1836-3-09		..INSERT- (USED ON ITEMS 154D, 154E, 154F, 154H, 156D, 156E, 156F, 156H, 157A)		4
R 169	NAS1836-3-11		..INSERT- (USED ON ITEMS 154A, 156A)	L,R	3
R 169A	NAS1836-3-09		..INSERT- (USED ON ITEMS 154F, 156F)	L,R	3
R 169B	NAS1836-3-09		..INSERT- (USED ON ITEM 157A)	S	4
R 169C	NAS1836-3-09		..INSERT	T,U	3
R 170	A11330-8-3		..NUT- (V72962) (SPEC BACN10FX21) (OPT BRC500-8-3 (V52828)) (OPT F49322-3-21 (V15653)) (OPT SL240-3-1 (V97393)) (OPT 130061 (V60119)) (USED ON ITEMS 154B, 154E, 154H, 156B, 156E, 156H)		6

25-28-13

 ILLUSTRATED PARTS LIST
 01.1 Page 1048
 Jan 10/87

 **BOEING**
COMPONENT
MAINTENANCE MANUAL

FIG. & ITEM	PART NO.	AIRLINE PART NUMBER	NOMENCLATURE 1234567	EFF CODE	QTY PER ASSY
R 01-172	413T1014-5		..SUPPORT- (USED ON ITEMS 154B, 154E, 154H, 156B, 156E, 156H) ATTACHING PARTS		6
R 174	NAS1801-3-5		..SCREW- (USED ON ITEMS 154B, 154E, 154H, 156B, 156E, 156H)		6
R 176	BACW10P183AL		..WASHER- (V10630) (SPEC BACW10P183AL) (USED ON ITEMS 154B, 154E, 154H, 156B, 156E, 156H)		6
R 180	413T1017-7		*----- .HINGE ASSY- (OPT ITEMS 180A, 180B) (PRE SB 25-78)	A-F, H-N,R	2
R -180A	413T1017-15		.HINGE ASSY- (OPT ITEMS 180, 180B) (PRE SB 25-78)	,S A-F, H-N,R	2
R -180B	413T1017-23		.HINGE ASSY (OPT ITEMS 180, 180A) (PRE SB 25-78)	,S A-F, H-N,R	2
-180G	413T1017-11		.HINGE ASSY- (OPT ITEMS 180H, 180J) (PRE SB 25-78)	P,Q	2
-180H	413T1017-17		.HINGE ASSY- (OPT ITEMS 180G, 180J) (PRE SB 25-78)	P,Q	2
R -180J	413T1017-25		.HINGE ASSY- (OPT ITEMS 180G, 180H) (PRE SB 25-78)	P,Q	2

25-28-13

FIG. & ITEM	PART NO.	AIRLINE PART NUMBER	NOMENCLATURE 1234567	EFF CODE	QTY PER ASSY
01- -180K	9994		.HINGE ASSY- (POST SB 25-78) (V80477)	A-F H-S	2
R 182	413T1017-8		.HINGE ASSY- (OPT ITEMS 182A, 182B) (PRE SB 25-78)	A-F, H-N,R ,S	2
R -182A	413T1017-16		.HINGE ASSY- (OPT ITEMS 182, 182B) (PRE SB 25-78)	A-F, H-N,R ,S	2
R -182B	413T1017-24		.HINGE ASSY- (OPT ITEMS 182, 182A) (PRE SB 25-78)	A-F, H-N,R ,S	2
-182G	413T1017-12		.HINGE ASSY- (OPT ITEMS 182H, 182J) (PRE SB 25-78)	P,Q	2
-182H	413T1017-18		.HINGE ASSY- (OPT ITEMS 182G, 182J) (PRE SB 25-78)	P,Q	2
R -182J	413T1017-26		.HINGE ASSY- (OPT ITEM 182G, 182H) (PRE SB 25-78)	P,Q	2
-182K	9994		.HINGE ASSY (POST SB 25-78) (V80477)	A-F H-S	2
R -183	413T1017-23		.HINGE ASSY (PRE SB 25-78)	T-X	2
R -183G	413T1017-24		.HINGE ASSY (PRE SB 25-78)	T-X	2
-183H	9994		.HINGE ASSY (POST SB 25-78) (V80477)	T-X	2
R 184	PSFW10F6DS05WH		ATTACHING PARTS .SCREW- (V12324) (OPT ITEM 184A)	A-F H-S	24
R -184A	BACS12FA3C5		.SCREW- (OPT ITEM 184)	A-F, H-S	24
R -184B	PSFW10F6DS05WH		.SCREW- (V12324)	T-X	24
R 186	NAS1801-3-6		.SCREW		16
188	NAS620A10L		DELETED		

25-28-13

 ILLUSTRATED PARTS LIST
 01.1 Page 1050
 Oct 01/91



BOEING
COMPONENT
MAINTENANCE MANUAL

FIG. & ITEM	PART NO.	AIRLINE PART NUMBER	NOMENCLATURE 1234567	EFF CODE	QTY PER ASSY
R 01-188A	BACW10P183AL		.WASHER- (V10630) (SPEC BACW10P183AL) -----*		16
R 189	413T1017-9		..HINGE ASSY- (USED ON ITEM 180)	A-F, H-N,R ,S	1
R -189A	413T1017-10		..HINGE ASSY- (USED ON ITEM 182)	A-F, H-N,R ,S	1
R -189B	413T1017-13		..HINGE ASSY- (USED ON ITEM 180G)	P,Q	1
R -189C	413T1017-14		..HINGE ASSY- (USED ON ITEM 182G)	P,Q	1
R -189D	413T1017-19		..HINGE ASSY- (USED ON ITEM 180A)	A-F, H-N,R ,S	1
R -189E	413T1017-27		..HINGE ASSY- (USED ON ITEM 180B, 183)	A-F, H-N, R-X	1
R -189F	413T1017-20		..HINGE ASSY- (USED ON ITEM 182A)	A-F, H-N,R ,S	1
R -189G	413T1017-28		..HINGE ASSY- (USED ON ITEM 182B, 183G)	A-F, H-N, R-X	1
R -189H	413T1017-21		..HINGE ASSY- (USED ON ITEM 180H)	P,Q	1
R -189J	413T1017-29		..HINGE ASSY- (USED ON ITEM 180J)	P,Q	1
R -189K	413T1017-22		..HINGE ASSY- (USED ON ITEM 182H)	P,Q	1
R -189L	413T1017-30		..HINGE ASSY- (USED ON ITEM 182J)	P,Q	1
190	413T1086-13		...HOUSING-CAM (OPT ITEM 191A) (USED ON ITEMS 189, 189B)	A-F, H-S	1
-190A	413T1086-13		...HOUSING-CAM (OPT ITEM 191B) (USED ON ITEMS 189E, 189J)		1
-190G	413T1086-19		...HOUSING ASSY- USED ON ITEMS 189D, 189H)	A-F, H-S	1

25-28-13

ILLUSTRATED PARTS LIST
01.101 Page 1051
Oct 01/91

FIG. & ITEM	PART NO.	AIRLINE PART NUMBER	NOMENCLATURE 1234567	EFF CODE	QTY PER ASSY
01-191	413T1086-19		...HOUSING ASSY- (OPT ITEM 191A) (USED ON ITEMS 189, 189B)	A-F, H-S	1
-191A	413T1086-31		...HOUSING-CAM (OPT ITEMS 190, 191) (USED ON ITEMS 189, 189B)	A-F, H-S	1
R -191B	413T1086-31		...HOUSING-CAM (OPT ITEM 190A) (USED ON ITEMS 189E, 189J)		1
-192	413T1086-14		...HOUSING-CAM (OPT ITEM 193A) (USED ON ITEMS 189A, 189C)	A-F, H-S	1
R -192A	413T1086-14		...HOUSING-CAM (OPT ITEM 193B) (USED ON ITEMS 189G, 189L)		1
-192G	413T1086-20		...HOUSING ASSY- (USED ON ITEMS 189F, 189K)	A-F, H-S	1
-193	413T1086-20		...HOUSING ASSY- (OPT ITEM 193A) (USED ON ITEMS 189A, 189C)	A-F, H-S	1
-193A	413T1086-32		...HOUSING-CAM (OPT ITEMS 192, 193) (USED ON ITEMS 189A, 189C)	A-F, H-S	1

25-28-13

 ILLUSTRATED PARTS LIST
 01.1 Page 1052
 Jan 10/87

FIG. & ITEM	PART NO.	AIRLINE PART NUMBER	NOMENCLATURE 1234567	EFF CODE	QTY PER ASSY
R 01- -193B	413T1086-32		...HOUSING-CAM (OPT ITEM 192A) (USED ON ITEMS 189G, 189L) ATTACHING PARTS		1
194	BACB30LH3PU28		...BOLT- (V06710) (SPEC BACB30LH3PU28) (OPT BACB30LH3PU28 (V06725)) (OPT BACB30LH3PU28 (V06950)) (OPT BACB30LH3PU28 (V08524)) (OPT BACB30LH3PU28 (V17943)) (OPT BACB30LH3PU28 (V27624)) (OPT BACB30LH3PU28 (V80539)) (OPT BACB30LH3PU28 (V92215)) (OPT BACB30LH3PU28 (V97928))		1
194A	BACB30LH3PU22		...BOLT- (V06710) (SPEC BACB30LH3PU22) (OPT BACB30LH3PU22 (V06725)) (OPT BACB30LH3PU22 (V06950)) (OPT BACB30LH3PU22 (V08524)) (OPT BACB30LH3PU22 (V17943)) (OPT BACB30LH3PU22 (V27624)) (OPT BACB30LH3PU22 (V80539)) (OPT BACB30LH3PU22 (V92215)) (OPT BACB30LH3PU22 (V97928)) -----*		2

25-28-13

FIG. & ITEM	PART NO.	AIRLINE PART NUMBER	NOMENCLATURE 1234567	EFF CODE	QTY PER ASSY
01-195	413T1086-21	DOUBLER- (USED ON ITEMS 190G, 191, 192G, 193)		1
196	NAS43DD3-30		...SPACER		1
198	413T1086-7		...DOOR		1
200	5S1-6		...STUD- (V71286)		1
			ATTACHING PARTS DELETED		
R 202	5S3-6		...WASHER- (V71286)		1
202A	5S3-2		...SCREW- (USED ON ITEMS 189, 189A, 189B, 189C)	A-F, H-S	1
204	413T1083-3		...SCREW- (USED ON ITEMS 189D, 189E, 189F, 189G, 189H, 189J, 189K, 189L)	A-F, H-S	1
-204A	413T1083-10		...SCREW- (USED ON ITEMS 189, 189A, 189B, 189C)	A-F, H-S	1
206	413T1083-2		...SCREW- (USED ON ITEMS 189D, 189E, 189F, 189G, 189H, 189J, 189K, 189L)	A-F, H-S	1
R -206A	413T1083-9		...SCREW- (USED ON ITEMS 189, 189A, 189B, 189C)		1
208	413T1085-4		...ROLLER		2
210	413T1085-3		...ROLLER		1
212	NAS1515M3L		...WASHER		2
214	413T1023-1		...ACTUATOR ASSY- (USED ON ITEMS 189, 189B, 189D, 189E, 189H, 189J)		1

25-28-13

 ILLUSTRATED PARTS LIST
 01.1 Page 1054
 Jan 10/87

FIG. & ITEM	PART NO.	AIRLINE PART NUMBER	NOMENCLATURE 1234567	EFF CODE	QTY PER ASSY
01- -216	413T1023-2		...ACTUATOR ASSY- (USED ON ITEMS 189A, 189C, 189F, 189G, 189K, 189L)		1
218	MS21209F4-10	INSERT		1
220	NAS77A3-24N	BUSHING		1
222	NAS77A3-68N	BUSHING		1
224	413T1023-3	ACTUATOR- (USED ON ITEM 214)		1
-226	413T1023-4	ACTUATOR- (USED ON ITEM 216)		1
228	413T1022-7		...FOLLOWER ASSY-CAM (USED ON ITEMS 189, 189B)	A-F, H-S	1
-228A	413T1022-7		...FOLLOWER ASSY-CAM (OPT ITEM 228B) (USED ON ITEMS 189D, 189H)		1
-228B	413T1022-11		...FOLLOWER ASSY-CAM (OPT ITEM 228A) (USED ON ITEMS 189D, 189H)		1
R -228C	413T1022-7		...FOLLOWER ASSY-CAM (OPT ITEM 228F) (USED ON ITEMS 189E, 189J)		1
R -228D	413T1022-11		...FOLLOWER ASSY-CAM (OPT ITEM 228F) (USED ON ITEMS 189E, 189J)		1
R -228E	413T1022-19		...FOLLOWER ASSY-CAM (OPT ITEMS 228C, 228D) (USED ON ITEMS 189E, 189J)		1

25-28-13

FIG. & ITEM	PART NO.	AIRLINE PART NUMBER	NOMENCLATURE 1234567	EFF CODE	QTY PER ASSY
01- -230	413T1022-8		...FOLLOWER ASSY-CAM (USED ON ITEMS 189A, 189C)	A-F, H-S	1
-230A	413T1022-8		...FOLLOWER ASSY-CAM (OPT ITEM 230B) (USED ON ITEMS 189F, 189K)		1
-230B	413T1022-12		...FOLLOWER ASSY-CAM (OPT ITEM 230A) (USED ON ITEMS 189F, 189K)		1
R -230C	413T1022-8		...FOLLOWER ASSY-CAM (OPT ITEM 230E) (USED ON ITEMS 189G, 189L)		1
R -230D	413T1022-12		...FOLLOWER ASSY-CAM (OPT ITEM 230E) (USED ON ITEMS 189G, 189L)		1
R -230E	413T1022-20		...FOLLOWER ASSY-CAM (OPT ITEMS 230C, 230D) (USED ON ITEMS 189G, 189L)		1
232	NAS76A3-009N	BUSHING		1
234	MS21209C0610	INSERT- (USED ON ITEMS 228, 228A 228C, 230, 230A, 230C)		2
236	413T1022-9	FOLLOWER- (USED ON ITEMS 228, 228A 228C)		1
-236A	413T1022-13	FOLLOWER- (USED ON ITEMS 228B, 228D)		1
R -236B	413T1022-17	FOLLOWER- (USED ON ITEM 228E)		1

25-28-13

 ILLUSTRATED PARTS LIST
 01.1 Page 1056
 Jan 10/87

 **BOEING**
COMPONENT
MAINTENANCE MANUAL

FIG. & ITEM	PART NO.	AIRLINE PART NUMBER	NOMENCLATURE 1234567	EFF CODE	QTY PER ASSY
01- -238	413T1022-10	FOLLOWER- (USED ON ITEMS 230, 230A 230C)		1
-238A	413T1022-14	FOLLOWER- (USED ON ITEMS 230B, 230D)		1
R -238B	413T1022-18	FOLLOWER- (USED ON ITEM 230E)		1
240	NAS601-3		...SCREW		2
241	MS35338-136		...WASHER		2
242	413T1083-5		...NUT		2
244	413T1087-1		...BRACKET		1
246	413T1020-1		...ARM ASSY-UPR (USED ON ITEMS 189, 189A, 189B, 189C)	A-F, H-S	1
R -246A	413T1020-1		...ARM ASSY-UPR (OPT ITEM 246B) (USED ON ITEMS 189D, 189E, 189F, 189G, 189H, 189J, 189K, 189L)		1
R -246B	413T1020-4		...ARM ASSY-UPR (OPT ITEM 246A) (USED ON ITEMS 189D, 189E, 189F, 189G, 189H, 189J, 189K, 189L)		1
248	NAS77A3-15N	BUSHING		2
250	MS21209C0615	INSERT- (USED ON ITEMS 246, 246A)		1
252	413T1020-2	ARM- (USED ON ITEMS 246, 246A)		1
-252A	413T1020-5	ARM- (USED ON ITEM 246B)		1
254	413T1083-6		...SCREW- (USED ON ITEMS 189, 189A, 189B, 189C)	A-F, H-S	1
R -254A	413T1083-11		...SCREW- (USED ON ITEMS 189D, 189E, 189F, 189G, 189H, 189J, 189K, 189L)		1

25-28-13

ILLUSTRATED PARTS LIST
01.1 Page 1057
Jan 10/87

FIG. & ITEM	PART NO.	AIRLINE PART NUMBER	NOMENCLATURE 1234567	EFF CODE	QTY PER ASSY
01-					
255	NAS1515M3L		...WASHER		2
256	413T1084-1		...SHAFT		1
258	413T1021-1		...ARM ASSY-LWR		1
260	NAS77A3-15N	BUSHING		4
262	NAS76A3-007N	BUSHING		1
R 264	413T1021-2	ARM		1
266	413T1083-8		...SCREW		1
270	413T1086-9		...SUPPORT ASSY-SPR (USED ON ITEMS 189, 189B, 189D, 189H)		1
R -270A	413T1086-9		...SUPPORT ASSY-SPR (OPT ITEM 270B) (USED ON ITEMS 189E, 189J)		1
R -270B	413T1086-35		...SUPPORT ASSY-SPR (OPT ITEM 270A) (USED ON ITEMS 189E, 189J)		1
-272	413T1086-10		...SUPPORT ASSY-SPR (USED ON ITEMS 189A, 189C, 189F, 189K)		1
R -272A	413T1086-10		...SUPPORT ASSY-SPR (OPT ITEM 272B) (USED ON ITEMS 189G, 189L)		1
R -272B	413T1086-36		...SUPPORT ASSY-SPR (OPT ITEM 272A) (USED ON ITEMS 189G, 189L)		1
276	UI19136-2B8	INSERT- (V07757) (OPT ITEM 276A)		1
-276A	6035-04BR0219	INSERT- (V01556) (OPT ITEM 276)		1
278	413T1086-11	SUPPORT- (USED ON ITEMS 270, 270A)		1
R -278A	413T1086-37	SUPPORT- (USED ON ITEM 270A)		1
-280	413T1086-12	SUPPORT-SPR (USED ON ITEMS 272, 272A)		1
R -280A	413T1086-38	SUPPORT-SPR (USED ON ITEM 272A)		1

25-28-13

 ILLUSTRATED PARTS LIST
 01.1 Page 1058
 Jan 10/87

 **BOEING**
COMPONENT
MAINTENANCE MANUAL

FIG. & ITEM	PART NO.	AIRLINE PART NUMBER	NOMENCLATURE 1234567	EFF CODE	QTY PER ASSY
01-282	413T1086-3		...HOUSING ASSY-SPR (USED ON ITEMS 189, 189D, 189E) (OPT ITEM 282A)	A-N, R-U	1
-282A	413T1086-15		...HOUSING ASSY-SPR (USED ON ITEMS 189, 189D, 189E) (OPT ITEM 282)	A-N, R-U	1
-284	413T1086-4		...HOUSING ASSY-SPR (USED ON ITEMS 189A, 189F, 189G) (OPT ITEM 284A)	A-N, R-U	1
-284A	413T1086-16		...HOUSING ASSY-SPR (USED ON ITEMS 189A, 189F, 189G) (OPT ITEM 284)	A-N, R-U	1
-285	413T1086-27		...HOUSING ASSY-SPR (USED ON ITEMS 189B, 189H, 189J) (OPT ITEM 285A)	P,Q	1
-285A	413T1086-23		...HOUSING ASSY-SPR (USED ON ITEMS 189B, 189H, 189J) (OPT ITEM 285)	P,Q	1
-286	413T1086-28		...HOUSING ASSY-SPR (USED ON ITEMS 189C, 189K, 189L) (OPT ITEM 286A)	P,Q	1
-286A	413T1086-24		...HOUSING ASSY-SPR (USED ON ITEMS 189C, 189K, 189L) (OPT ITEM 286)	P,Q	1
288	UI19136-2B8	INSERT- (V07757) (OPT ITEM 288A)		1
-288A	6035-04BR0219	INSERT- (V01556) (OPT ITEM 288)		1
290	UI19136-6B8	INSERT- (V07757) (OPT ITEM 290A)		3
-290A	6041-3BR0375	INSERT- (V01556) (OPT ITEM 290)		3

25-28-13

ILLUSTRATED PARTS LIST
01.1 Page 1059
Jan 10/87

FIG. & ITEM	PART NO.	AIRLINE PART NUMBER	NOMENCLATURE 1234567	EFF CODE	QTY PER ASSY
01-292	413T1086-5	HOUSING- (USED ON ITEM 282)	A-N, R-U	1
-292A	413T1086-17	HOUSING- (USED ON ITEM 282A)	A-N, R-U	1
-293	413T1086-29	HOUSING- (USED ON ITEM 285)	P,Q	1
-293A	413T1086-25	HOUSING- (USED ON ITEM 285A)	P,Q	1
-294	413T1086-6	HOUSING- (USED ON ITEM 284)	A-N, R-U	1
-294A	413T1086-18	HOUSING- (USED ON ITEM 284A)	A-N, R-U	1
-295	413T1086-30	HOUSING- (USED ON ITEM 286)	P,Q	1
-295A	413T1086-26	HOUSING- (USED ON ITEM 286A)	P,Q	1
296	413T1017-3		...RECEPTACLE ASSY		1
298	NAS1352C04LB4		...SCREW		2
			-----*		
300	5R3-1	RECEPTACLE- (V71286)		1
301	F1313A		DELETED		
R 301A	F1313		..SPRING ASSY-GAS (V55787) (SPEC S413T301-2)		1
R 302	412T2014-1		.FITTING ASSY	A-F, H-V	1
R 303	412T2014-1		.FITTING ASSY	M-Q,R	1
R 303J	412T2014-3		.FITTING ASSY	W,X	1
R 303M	412T3109-39		.FITTING ASSY	W	1
R -303N	412T3109-40		.FITTING ASSY	X	1
			ATTACHING PARTS		

25-28-13

 ILLUSTRATED PARTS LIST
 01.1 Page 1060
 Jan 10/87

FIG. & ITEM	PART NO.	AIRLINE PART NUMBER	NOMENCLATURE 1234567	EFF CODE	QTY PER ASSY
R 01-304	NAS623-3-2		. SCREW	A-F, H-V	2
R 304A	NAS623-3-3		. SCREW	W,X	1
R 304B	NAS620A10L		. WASHER	W,X	1
R 304J	NAS623-3-2		. SCREW	W,X	6
R 304L	NAS620A10L		. WASHER	W,X	6
R 305	NAS623-3-2		. SCREW	M-Q,R	2
R 305J	NAS623-3-2		. SCREW	W,X	2
R 306	NAS620A10L		. WASHER	A-F, H-V	2
R 306J	NAS620A10L		. WASHER	W,X	2
R 307	NAS620A10L		. WASHER	M-Q,R	2
			-----*		
R 308	BACB28AR04A050A		.. BUSHING		1
R 309	BACB28AR04A050A		.. BUSHING	M-Q,R	1
R 309J	BACB28AR06A012A		.. BUSHING	W,X	1
R 310	412T2014-2		.. FITTING	A-F, H-V	1
R 310J	412T2014-4		.. FITTING	W,X	1
R 311	412T2014-2		.. FITTING	M-Q,R	1
R 311J	412T3109-41		.. FITTING	W	1
R -311M	412T3109-42		.. FITTING	X	1
R 312	412T1004-5SP		. RAIL ASSY	A	1
R -312A	412T1004-75SP		. RAIL ASSY	B,D-F, ,S,T, V	1
R -312B	412T1004-57SP		. RAIL ASSY	M,P,R	1
R 313	412T1004-77SP		. RAIL ASSY	C	1
R 313J	412T1004-125SP		. RAIL ASSY	W	1
R -314	412T1004-6SP		. RAIL ASSY	H	1
R -314A	412T1004-76SP		. RAIL ASSY	J,L,Q, ,U	1

25-28-13

FIG. & ITEM	PART NO.	AIRLINE PART NUMBER	NOMENCLATURE 1234567	EFF CODE	QTY PER ASSY
01-					
R -314B	412T1004-58SP		.RAIL ASSY	N	1
315	412T1004-78SP		.RAIL ASSY	K	1
R -315J	412T1004-126SP		.RAIL ASSY	X	1
			ATTACHING PARTS		
R 316	NAS6603-2		.BOLT		16
R 318	AN960KD10L		.WASHER		16
			-----*-----		
R 320	412T1004-19SP		..SURFACE-DECORATIVE	A,H	1
R -320A	412T1004-25SP		..SURFACE-DECORATIVE	B,D-F ,J,L, Q,S-V	1
R -320B	412T1004-35SP		..SURFACE-DECORATIVE	C,K	1
R -320C	412T1004-61SP		..SURFACE-DECORATIVE	M-P,R	1
R -320D	412T1004-35SP		..SURFACE-DECORATIVE	W,X	1
	321 412T1004-13		..RAIL	A	1
	-322 412T1004-14		..RAIL	H	1
R -322A	412T1004-23		..RAIL	B,D-F ,S,T, V	1
R -323	412T1004-33		..RAIL	C	1
R 323J	412T1004-127		..RAIL	W	1
R -323M	412T1004-128		..RAIL	X	1
R -324A	412T1004-24		..RAIL	J,L,Q ,U	1
R -324B	412T1004-59		..RAIL	M,P,R	1
	-324C 412T1004-60		..RAIL	N	1
	-325 412T1004-34		..RAIL	K	1
R 326	412T1008-4		..ANGLE	B-F, J-L,Q ,S-X	1
			ATTACHING PARTS		
R 326A	BACR15BA5KE5		..RIVET	B-F, J-L,Q	2
			-----*-----		
R 327	2055051		..RETAINER- (V04169)	,S-X B-F, J-L,Q ,S-X	1

25-28-13

 ILLUSTRATED PARTS LIST
 01.1 Page 1062
 Jan 10/87

BOEING
COMPONENT
MAINTENANCE MANUAL

FIG. & ITEM	PART NO.	AIRLINE PART NUMBER	NOMENCLATURE 1234567	EFF CODE	QTY PER ASSY
R 01-328	2055051		.RETAINER- (V04169)		7
R 329	413T1081-3		DELETED		
R 329A	413T1081-25		.CHANNEL ASSY	A-F, M , P, R-T, V , W	1
R -330	413T1081-4		DELETED		
R -330A	413T1081-26		.CHANNEL ASSY	H-L, N , Q, U, X	1
R 332	NAS623-3-1		ATTACHING PARTS .SCREW		31
R 333	NAS623-3-3		.SCREW		1
R 334	NAS620A10L		.WASHER		32
			-----*		
R 336	BRF100A3		..NUTPLATE- (V52828) (SPEC BACN10KB3F) (OPT F2000-3 (V15653)) (OPT T8114S1032S (V11815)) (OPT VN151A1-02 (V92215)) (OPT F2000-3 (V15653)) (OPT VN151A1-02 (V92215))		4
R 338	F5000-3BAC		..NUTPLATE- (V15653) (SPEC BACN10JR3F) (OPT NS103203-02 (V80539)) (OPT RMF9201-3 (V72962)) (OPT T8091S1032 (V11815)) (OPT VN152A1-02 (V92215)) (OPT BRF200A3 (V52828)) ATTACHING PARTS		14

25-28-13

FIG. & ITEM	PART NO.	AIRLINE PART NUMBER	NOMENCLATURE 1234567	EFF CODE	QTY PER ASSY
R 01-340	BACR15BA3AD		..RIVET- (SIZE DETERMINE ON INST) -----*-----		36
R 342 342A	413T1081-9 413T1081-27		DELETED ..CHANNEL	A-F,M ,P, R-T,V ,W	1
R -344 -344A	413T1081-10 413T1081-28		DELETED ..CHANNEL	H-L,N ,Q,U, X	1
R 346	412T1000-5SP		.RAIL AND BRACKET ASSY- PASS. SVCE UNIT/SIDEWALL SPRT	A	1
R 346J	412T1000-57SP		.RAIL AND BRACKET ASSY- PASS. SVCE UNIT/SIDEWALL SPRT	W	1
R 347	412T1000-9SP		.RAIL AND BRACKET ASSY- PASS. SVCE UNIT/SIDEWALL SPRT	B,D-F ,S,T, V	1
R -347A	412T1000-15SP		.RAIL AND BRACKET ASSY- PASS. SVCE UNIT/SIDEWALL SPRT	C	1
R -347B	412T1000-21SP		.RAIL AND BRACKET ASSY- PASS. SVCE UNIT/SIDEWALL SPRT	M,P,R	1
R -348	412T1000-6SP		.RAIL AND BRACKET ASSY- PASS. SVCE UNIT/SIDEWALL SPRT	H	2
R -348J	412T1000-58SP		.RAIL AND BRACKET ASSY- PASS. SVCE UNIT/SIDEWALL SPRT	X	2
R -349	412T1000-10SP		.RAIL AND BRACKET ASSY- PASS. SVCE UNIT/SIDEWALL SPRT	J,L,Q ,U	1
R -349A	412T1000-16SP		.RAIL AND BRACKET ASSY- PASS. SVCE UNIT/SIDEWALL SPRT	K	1
R -349B	412T1000-22SP		.RAIL AND BRACKET ASSY- PASS. SVCE UNIT/SIDEWALL SPRT	N	1
R 349T	NAS1801-3-5		ATTACHING PARTS .SCREW		10

25-28-13

 ILLUSTRATED PARTS LIST
 01.1 Page 1064
 Jan 10/87

FIG. & ITEM	PART NO.	AIRLINE PART NUMBER	NOMENCLATURE 1234567	EFF CODE	QTY PER ASSY
R 01-349W	NAS620A10L		.WASHER -----*		10
R 350	412T1001-3		..CHANNEL ASSY	A-F, M P, R-T, V	1
R -352	412T1001-4		..CHANNEL ASSY	W H-L, N Q, U, X	1
R 354	NAS6603-3		ATTACHING PARTS ..BOLT		2
R 356	AN960PD10		..WASHER		2
R 358	BACR15FT5D5		DELETED		
R 358A	NAS623-2-2		..SCREW		2
R 359	AN960PD8L		..WASHER		2
R 359G	H10-08BAC		..NUT- (V15653) (SPEC BACN10JC08) (OPT NS202101-82 (V80539)) (OPT RMLH9075-82W (V72962)) (OPT T6S832J (V71087)) (OPT VN303A82 (V92215)) (OPT 96-82 (V80539)) (OPT BRH10A08 (V52828)) -----*		2

25-28-13

FIG. & ITEM	PART NO.	AIRLINE PART NUMBER	NOMENCLATURE 1234567	EFF CODE	QTY PER ASSY
R 01-360	BRM100A3		...NUTPLATE- (V52828) (SPEC BACN10JP3B) (OPT MK2000-3BAC (V15653)) (OPT NS103198-02 (V80539)) (OPT RMA9207-3 (V72962)) (OPT T8077S1032 (V11815)) (OPT VN201A1-02 (V92215)) ATTACHING PARTS		2
R 362	BACR15BA3AD		...RIVET- (SIZE DETERMINE ON INST) -----*-----		4
R 364	412T1001-9		...CHANNEL	A-F,M ,P, R-T,V ,W	1
R -366	412T1001-10		...CHANNEL	H-L,N ,Q,U, X	1
R 368	412T1003-2		..BRACKET ASSY	A-F,M ,P, R-T,V ,W	5
R -370	412T1003-1		..BRACKET ASSY	H-L,N ,Q,U, X	5

25-28-13

 ILLUSTRATED PARTS LIST
 01.1 Page 1066
 Jan 10/87

FIG. & ITEM	PART NO.	AIRLINE PART NUMBER	NOMENCLATURE 1234567	EFF CODE	QTY PER ASSY
01-					
R 372	NAS6603-3		ATTACHING PARTS		
R 374	AN960PD10		..BOLT		10
			..WASHER		10
			-----*		
R 378	BRM300A3		...NUTPLATE-		2
			(V52828)		
			(SPEC BACN10JP3C)		
			(OPT MK3000-3BAC		
			(V15653))		
			(OPT NS103199-02		
			(V80539))		
			(OPT T8078S1032		
			(V71087))		
			(OPT T8078S1032		
			(V11815))		
			(OPT VN203A1-02		
			(V92215))		
R 379	BACR15BA3AD		ATTACHING PARTS		
			...RIVET-		4
			(SIZE DETERMINE ON INST)		
			-----*		
R -380	412T1003-3		...BRACKET	H-L,N ,Q,U, X	1
R 380A	412T1003-4		...BRACKET	A-F,M ,P, R-T	1
R 381	2055144		..RETAINER-	B-F, J-L,Q ,S-V	12
			(V04169)		
R 381A	2055051		DELETED		
R 382	2055144		..RETAINER-	A,H,M ,N	11
			(V04169)		
R 383	412T1002-25SP		..RAIL ASSY	B,D-F ,S,T, V	1

25-28-13

FIG. & ITEM	PART NO.	AIRLINE PART NUMBER	NOMENCLATURE 1234567	EFF CODE	QTY PER ASSY
R 01-					
R -383A	412T1002-26SP		..RAIL ASSY	J,L,Q U	1
R -383B	412T1002-59SP		..RAIL ASSY	M,P,R	1
R -383C	412T1002-60SP		..RAIL ASSY	N	1
R 384	412T1002-5SP		..RAIL ASSY	A	1
R 384J	412T1002-151SP		..RAIL ASSY	W	1
R 385	412T1002-45SP		..RAIL ASSY	C	1
R -385A	412T1002-46SP		..RAIL ASSY	K	1
R -386	412T1002-6SP		..RAIL ASSY	H	1
R -386J	412T1002-152SP		..RAIL ASSY	X	1
R 387	412T1002-24SP		...SURFACE-DECORATIVE	B,D-F J,L Q,S-V	1
R -387A	412T1002-63SP		...SURFACE-DECORATIVE	M-P,R	1
R 388	412T1002-19SP		...SURFACE-DECORATIVE	A,H	1
R 389	412T1002-44SP		...SURFACE-DECORATIVE	C,K,W X	1
R 390	WS1-332A8		...NUTPLATE- (V04169) (SPEC BACN10GH3A8) ATTACHING PARTS		5
R 391	BACR15BB4AD4		...RIVET- (V09192) (SPEC BACR15BB4AD4) (OPT BACR15BB4AD4 (V42838)) (OPT BACR15BB4AD4 (V53551)) (OPT BACR15BB4AD4 (V55580)) (SIZE DETERMINE ON INST) -----*-----		10
R 392	NAS1801-3-12		...SCREW		4
R 392A	MS35338-43		...WASHER		4
R 392B	AN960D10L		...WASHER		8
R 392C	MS35650-305S		...NUT		4
R 393	412T1002-13		...RAIL	A	1
R -393A	412T1002-14		...RAIL	H	1
R -393B	412T1002-61		...RAIL	M,P,R	1
R 394	412T1002-27		...RAIL	B,D-F S,T V	1

25-28-13

FIG. & ITEM	PART NO.	AIRLINE PART NUMBER	NOMENCLATURE 1234567	EFF CODE	QTY PER ASSY
R 01- -394A	412T1002-28		...RAIL	J,L,Q ,U	1
R -394B	412T1002-62		...RAIL	N	1
R 395	412T1002-47		...RAIL	C	1
R -395A	412T1002-48		...RAIL	K	1
R 396	412T1002-153		...RAIL	W	1
R -397	412T1002-154		...RAIL	X	1
R 398	412T3109-7		.FITTING ASSY	A-F,S ,T,V	1
R -398A	412T3109-1		.FITTING ASSY	M,P,R	1
R -400	412T3109-8		.FITTING ASSY	H-L,Q ,U	1
-400A	412T3109-2		.FITTING ASSY	N	1
R 401	NAS623-3-1		.SCREW	W,X	7
R 401J	NAS620A10L		.WASHER	W,X	7
R 402	NAS623-3-1		ATTACHING PARTS .SCREW	A-F, H-L,Q ,S-U	15
R 402A	NAS623-3-1		.SCREW -----*-----	M-P,R	13
R 403	412T3109-37		.FITTING	W	1
R -403A	412T3109-38		.FITTING	X	1
R 404	NAS620A10L		ATTACHING PARTS .WASHER	A-F, H-L,Q ,S-U	15
R 404A	NAS620A10L		.WASHER -----*-----	M-P,R	13
R 406	BACB28X4C005		..BUSHING- (V23294) (SPEC BACB28X4C005) (OPT BACB28X4C005 (V70265)) (OPT BACB28X4C005 (V94892))	A-F, H-L,Q ,S-U	1

25-28-13

FIG. & ITEM	PART NO.	AIRLINE PART NUMBER	NOMENCLATURE 1234567	EFF CODE	QTY PER ASSY
R 01- -406A	BACB28AR06A024A		..BUSHING- (V09455) (SPEC BACB28AR06A024A) (OPT BACB28AR06A024A (V15860)) (OPT BACB28AR06A024A (V50294)) (OPT BACB28AR06A024A (V73134)) (OPT BACB28AR06A024A (V77896)) (OPT BACB28AR06A024A (V97613))	M-P,R	1
R 407	412T3109-21		..DOUBLER	M-P,R	1
R 408	412T3109-17		..FITTING	A-F,S T	1
R -408A	412T3109-11		..FITTING	M,P,R	1
R -410	412T3109-18		..FITTING	H-L,Q U	1
R -410A	412T3109-12		..FITTING	N	1
R 412	412T3109-9		.FITTING ASSY	A-F,M P, R-T,V	1
R -414	412T3109-10		.FITTING ASSY	W H-L,N Q,U, X	1
			ATTACHING PARTS		

25-28-13

 ILLUSTRATED PARTS LIST
 01.1 Page 1070
 Jan 10/87

FIG. & ITEM	PART NO.	AIRLINE PART NUMBER	NOMENCLATURE 1234567	EFF CODE	QTY PER ASSY
R 01- R 415 R 415J	NAS623-3-1 BACB30LU3-9		.SCREW .BOLT- (V06710) (SPEC BACB30LU3-9) (OPT BACB30LU3-9 (V06725)) (OPT BACB30LU3-9 (V06950)) (OPT BACB30LU3-9 (V17943)) (OPT BACB30LU3-9 (V27624)) (OPT BACB30LU3-9 (V56878)) (OPT BACB30LU3-9 (V80539)) (OPT BACB30LU3-9 (V85495)) (OPT BACB30LU3-9 (V92215)) (OPT BACB30LU3-9 (V97928))		5 3
R 416 R 416J R 416M	NAS620A10L AN960PD10L H10-3BAC		.WASHER .WASHER .NUT- (V15653) (SPEC BACN10JC3) (OPT NS202101-02 (V80539)) (OPT RMLH9075-3W (V72962)) (OPT T6S1032J (V71087)) (OPT VN303A02 (V92215)) (OPT 96-02 (V80539)) (OPT BRH10A3 (V52828)) -----*		5 3 3

25-28-13

FIG. & ITEM	PART NO.	AIRLINE PART NUMBER	NOMENCLATURE 1234567	EFF CODE	QTY PER ASSY
R 01-417	BACB28X4C005		..BUSHING- (V23294) (SPEC BACB28X4C005) (OPT BACB28X4C005 (V70265)) (OPT BACB28X4C005 (V94892))		1
R 418	412T3109-19		..FITTING	A-F, M P, R-T, V W	1
R -420	412T3109-20		..FITTING	H-L, N Q, U, X	1
R 422	412T2010-1		.TIE ASSY-TNSN (OPT ITEM 422A)		1
R -422A	1281-1		.TIE ASSY-TNSN (V34742) (OPT ITEM 422)		1
R 426 426A	BACB30NF10A24 HL19PB10-24		ATTACHING PARTS DELETED .BOLT- (V56878) (SPEC BACB30FN10-24) (OPT HL19PB10-24 (V73197)) (OPT HL19PB10-24 (V92215)) (OPT HL19PB10-24 (V97928)) (OPT 62547-10-24 (V56878)) (OPT HL19PB10-24 (V80539)) (OPT WC2510-24 (V60516)) (OPT HL19PB10-24 (V60516)) (OPT HL19PB10-24 (V08524))		1

25-28-13

 ILLUSTRATED PARTS LIST
 01.1 Page 1072
 Jan 10/87

 **BOEING**
COMPONENT
MAINTENANCE MANUAL

FIG. & ITEM	PART NO.	AIRLINE PART NUMBER	NOMENCLATURE 1234567	EFF CODE	QTY PER ASSY
R 01-428	BACB28Z5-025		.BUSHING- (V23294) (SPEC BACB28Z5-025) (OPT BACB28Z5-025 (V70265)) (OPT BACB28Z5-025 (V94892))		2
R 430	AN960C516L		.WASHER		1
R 432	BR1110C5M		.NUT- (V52828) (SPEC BACN10JC5CM) (OPT H01-5BAC (V15653)) (OPT T6C524JM (V11815)) (OPT 109LH9075-5W (V72962)) (OPT 97E054 (V80539))		1
R 434	412T2010-2		-----* ..TUBE- (USED ON ITEM 422)		1
R 436	412T2010-3		..PAD- (USED ON ITEM 422)		1
R 438	412T2011-1		..FITTING ASSY- (USED ON ITEM 422) ATTACHING PARTS		1
R 440	SALPYT6-16		..BOLT- (V11815) (SPEC BACB30GW6-16) (OPT SALPYT6-16 (V29666))		2

25-28-13

FIG. & ITEM	PART NO.	AIRLINE PART NUMBER	NOMENCLATURE 1234567	EFF CODE	QTY PER ASSY
R 01-442	2DCC6		..COLLAR- (V11815) (SPEC BACC30K6) (OPT 2DCC6 (V17446)) -----*		2
R 444	HU4-134		...BEARING- (V02758) (SPEC BACB10AB4) (OPT ABW4V5 (V50294)) (OPT AB4VCRG (V15860)) (OPT BSSR4804 (V81376)) (OPT KWB4-20CRG (V97613)) (OPT WG4E (V73134)) (OPT 55282 (V09455))		1
R 446	412T2011-2		...FITTING		1
R 448	10-60779-112L		..BEARING-ROD END (USED ON ITEM 422)		1
R 450	412T2012-2		..NUT- (USED ON ITEM 422)		1
R 452	412T2012-1		..SLEEVE- (USED ON ITEM 422)		1
R 454	AN316-6L		..NUT- (USED ON ITEM 422)		1
R 456	412T2045-1		.FITTING	A-F,M ,P, R-T,V ,W	1

25-28-13

FIG. & ITEM	PART NO.	AIRLINE PART NUMBER	NOMENCLATURE 1234567	EFF CODE	QTY PER ASSY
R 01-458	412T2045-2		.FITTING	H-L,N ,Q,U, X	1
R 460	BACB30LU3-10		ATTACHING PARTS .BOLT- (V06710) (SPEC BACB30LU3-10) (OPT BACB30LU3-10 (V06725)) (OPT BACB30LU3-10 (V06950)) (OPT BACB30LU3-10 (V17943)) (OPT BACB30LU3-10 (V27624)) (OPT BACB30LU3-10 (V56878)) (OPT BACB30LU3-10 (V80539)) (OPT BACB30LU3-10 (V85495)) (OPT BACB30LU3-10 (V92215)) (OPT BACB30LU3-10 (V97928))		4
R 462	AN960KD10		DELETED		
R 462A	AN960PD10		.WASHER		1
R 464	AN960KD10L		DELETED		
R 464A	AN960PD10L		.WASHER		1
R 468	412T2046-1		.DOUBLER	A-F,M ,P, R-T,V ,W	1
R -470	412T2046-2		.DOUBLER	H-L,N ,Q,U, X	1

25-28-13

FIG. & ITEM	PART NO.	AIRLINE PART NUMBER	NOMENCLATURE 1234567	EFF CODE	QTY PER ASSY
R 01-472	H10-3BAC		.NUT- (V15653) (SPEC BACN10JC3) (OPT NS202101-02 (V80539)) (OPT RMLH9075-3W (V72962)) (OPT T6S1032J (V71087)) (OPT VN303A02 (V92215)) (OPT 96-02 (V80539)) (OPT BRH10A3 (V52828))		4
R 474	NAS514P1032-4		.SCREW		3
R 476	NAS514P1032-5		.SCREW		1
			-----*		
R 478	413T1095-7		.RETAINER ASSY- (OPT ITEM 478A)	A-F, H-S	1
R -478A	413T1095-9		.RETAINER ASSY- (OPT ITEM 478)	A-F, H-S	1
R -478B	413T1095-9		.RETAINER ASSY ATTACHING PARTS	T-X	1
R 480	NAS514P1032-9		.SCREW		2
			-----*		
R 482	413T1095-5		..PLUG		1
R 484	BACS18K10-23W		..SPACER- (V08073) (SPEC BACS18K10-23W) (USED ON ITEM 478)	A-F, H-S	2
R -484A	BACS18K10-23		..SPACER- (USED ON ITEM 478A)		2
R 486	BACS18D10-15W		DELETED		
R 486A	BACS18K10-15W		..SPACER- (V08073) (SPEC BACS18K10-15W) (USED ON ITEM 478)	A-F, H-S	1
R -486B	BACS18K10-15		..SPACER- (USED ON ITEM 478A)		1
R 488	413T1095-4		..RETAINER		1
R 490	413T1013-11		.SHELL ASSY	A-C,M P	1
R -490A	413T1013-155		.SHELL ASSY	D,V	1
R -490B	413T1013-229		.SHELL ASSY	E	1

25-28-13

 ILLUSTRATED PARTS LIST
 01.1 Page 1076
 Jan 10/87

FIG. & ITEM	PART NO.	AIRLINE PART NUMBER	NOMENCLATURE 1234567	EFF CODE	QTY PER ASSY
01-					
R -490C	413T1013-239		.SHELL ASSY	F	1
R -490D	413T1013-253		DELETED		
R -491	413T1013-661		.SHELL ASSY	W	1
R -491J	413T1013-662		.SHELL ASSY	X	1
R -492	413T1013-12		.SHELL ASSY	H-K,N ,Q	1
R -492A	413T1013-254		.SHELL ASSY	L	1
R -493	413T1013-419		.SHELL ASSY	T	1
R -493G	413T1013-420		.SHELL ASSY	U	1
R 494	413T1013-22		..PANEL ASSY-INBD	A-F,M ,P, R-T,V ,W	1
R -496	413T1013-21		..PANEL ASSY-INBD	H-L,N ,Q,U, X	1
R 498	NAS1836-3-07		...INSERT		5
R 500	413T1013-91		..PANEL ASSY-INBD	A-F,M ,P, R-T,V ,W	1
R -502	413T1013-92		..PANEL ASSY-INBD	H-L,N ,Q,U, X	1
R 504	NAS1836-3-07		...INSERT		5
R 506	413T1013-51		..PANEL ASSY-FWD	A-F,M ,P, R-T,V	1
R 507	413T1013-631		..PANEL ASSY-FWD	W	1
R -508	413T1013-52		..PANEL ASSY-FWD	H-L,N ,Q,U	1
R -509	413T1013-632		..PANEL ASSY-FWD	X	1
R 510	NAS1834-3-400		...INSERT- (OPT ITEM 510A)		6

25-28-13

FIG. & ITEM	PART NO.	AIRLINE PART NUMBER	NOMENCLATURE 1234567	EFF CODE	QTY PER ASSY
R 01-510A	NAS1834A3-400		...INSERT- (OPT ITEM 510)		6
R 512	NAS1836-3-11		...INSERT		21
R 513	NAS1836-3-11		...INSERT	W,X	6
R 514	413T1011-1		..PAN ASSY	A-F,M P R-T V-X	2
R 516	413T1011-1		..PAN ASSY	H-L,N Q,U	1
R 517	413T1011-5		..PAN ASSY	H-L,N Q,U	1
R 518	NAS603-4P		ATTACHING PARTS ..SCREW		8
R 520	AN960KD10L		..WASHER -----*		8
R 522	413T1011-3		..PAN ASSY	A-F,M P R-T,V W	1
R -524	413T1011-4		..PAN ASSY	H-L,N Q,U X	1
R 526	NAS603-4P		ATTACHING PARTS ..SCREW		4
R 528	AN960PD10L		..WASHER -----*		4
530	413T1013-33		..PANEL ASSY	A-C,M P	1

25-28-13

 ILLUSTRATED PARTS LIST
 01.1 Page 1078
 Jan 10/87

FIG. & ITEM	PART NO.	AIRLINE PART NUMBER	NOMENCLATURE 1234567	EFF CODE	QTY PER ASSY
01-					
R -530A	413T1013-157		..PANEL ASSY	D,X	1
-530B	413T1013-231		..PANEL ASSY	E,F	1
-530C	413T1013-255		DELETED		
R -531	413T1013-663		..PANEL ASSY	W	1
-532	413T1013-34		..PANEL ASSY	H-K,N	5
				,Q	
-532A	413T1013-256		..PANEL ASSY	L	1
R -532B	413T1013-357		..PANEL ASSY	R	1
R -532C	413T1013-395		..PANEL ASSY	S	1
R -532D	413T1013-421		..PANEL ASSY	T	1
R -532E	413T1013-422		..PANEL ASSY	U	1
R -533	413T1013-664		..PANEL ASSY	X	5
R 536	413T1016-3		...BOND ASSY-DBLR		1
R 538	NAS1836-3-11		...INSERT	A-F,	87
				H-S,	
				V-X	
R 538A	NAS1836-3-11		...INSERT	T,U	66
539	NAS1836-3-11		...INSERT	D	4
R 539A	NAS1836-3-11		...INSERT	E,F,L	4
				,R	
R 540	NAS1836-08-11		...INSERT		4
R 542	NAS1834-3-400		...INSERT-		10
			(OPT ITEM 542A)		
R -542A	NAS1834A3-400		...INSERT-		10
			(OPT ITEM 542)		
R 544	NAS1833-3-400		...INSERT		2
R 546	NAS1834-4-400		...INSERT-		6
			(OPT ITEM 546)		
R -546A	NAS1834A4-400		...INSERT-		6
			(OPT ITEM 546)		
R 548	SL618-3A		...INSERT-		15
			(V97393)		

25-28-13

FIG. & ITEM	PART NO.	AIRLINE PART NUMBER	NOMENCLATURE 1234567	EFF CODE	QTY PER ASSY
01-					
R 548A	SL618-3A		...INSERT- (V97393)	T,U	4
R 549	SL618-3A		...INSERT- (V97393)	E,F,L	4
R 549A	SL618-3A		...INSERT- (V97393)	R	5
R 550	NAS1834C5-400		...INSERT		1
R 552	413T1013-105		..PANEL ASSY-AFT	A-C,F ,M,P, R-T	1
R -552A	413T1013-159		..PANEL ASSY-AFT	D,V	1
R -552B	413T1013-237		..PANEL ASSY-AFT	E	1
R -554	413T1013-106		..PANEL ASSY-AFT	H-L,N ,Q,U	1
R -555	413T1013-23		..PANEL ASSY-AFT	W	1
R -560	413T1013-24		..PANEL ASSY-AFT	X	1
R 570	NAS1834-3-400		...INSERT- (OPT ITEM 570A)		3
R -570A	NAS1834A3-400		...INSERT- (OPT ITEM 570)		3
R 575	NAS1836-3-11		...INSERT		24
R 576	NAS1836-3-11		...INSERT	D,V	4
R 577	SL618-3A		...INSERT- (V97393)	E	4
R 578	NAS1836-3-11		...INSERT	A-F, H-U	4
R 580	413T1098-1		.BRACKET	L,R,T ,U	7
			ATTACHING PARTS		
R 585	NAS623-3-1		.SCREW	L,R,T ,U	14
R 587	NAS620A10L		.WASHER	L,R,T ,U	14
			-----*-----		
R 590	413T1012-7		.PANEL ASSY-DIVIDER	R	1
R -591	413T1012-19		.PANEL ASSY-DIVIDER	T	1
R -595	413T1012-8		.PANEL ASSY-DIVIDER	L	1
R -596	413T1012-20		.PANEL ASSY-DIVIDER	U	1
R 600	NAS1836-3-11		..INSERT	L,R,T ,U	7
605	413T1002-18		DELETED		

25-28-13

 ILLUSTRATED PARTS LIST
 01.1 Page 1080
 Jan 10/87

FIG. & ITEM	PART NO.	AIRLINE PART NUMBER	NOMENCLATURE 1234567	EFF CODE	QTY PER ASSY
R 01-610	BAC27TPPS0118		.PLACARD-SOFT ARTICLES ONLY	D-F	2
R 611	BAC27TPPS0248		.PLACARD-DOOR MUST BE LATCHED	A-F, H-K, M-Q, S, W,X	2
	615	BAC27TPPS0249	DELETED		
	620	BAC27TPPS0249	DELETED		
R 625	BAC27TPPS0248		.PLACARD-DOOR MUST BE LATCHED	L,R,T, U	1
R 630	BAC29PPS0556		.PLACARD-DOOR MUST BE LATCHED CLOSED LOAD LIMIT 31 LB/14 KG	L,R	1
R 630A	BAC29PPS0555		.PLACARD-DOOR MUST BE LATCHED CLOSED LOAD LIMIT 37 LB/16 KG	T,U	1
R 635	BAC29PPS0557		.PLACARD-DOOR MUST BE LATCHED CLOSED LOAD LIMIT 25 LB/11 KG	L,R,T, U	1
R 640	BAC29PPS0558		.PLACARD-EMERGENCY EQUIPMENT ONLY	L,R,T, U	1
R 645	BAC29PPS0619		.PLACARD-SOFT ARTICLES ONLY	V	2
R 650	BAC29PPS2172		.PLACARD	V	2
R 655	BAC29PPS2176		.PLACARD	V	2

25-28-13